

## Anti-Homeobox protein EMX2 Emx2 Antibody

Catalog Number: A04322-2

### Overview

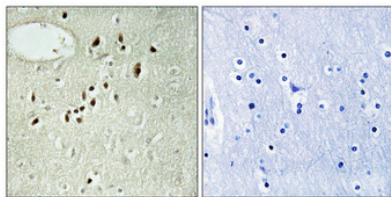
Product Name	Anti-Homeobox protein EMX2 Emx2 Antibody
Reactive Species	Human, Mouse
Description	Boster Bio Anti-Homeobox protein EMX2 Emx2 Antibody catalog # A04322-2. Tested in ELISA, IHC applications. This antibody reacts with Human, Mouse.
Application	ELISA, IF, IHC
Clonality	Polyclonal
Formulation	Liquid in PBS containing 50% glycerol, 0.5% stabilizing protein and 0.02% sodium azide. *This antibody is supplied in a stabilized formulation. Compatibility with conjugation reactions depends on the chemistry of the conjugation method used. For conjugation methods that are not compatible with the stabilizing components present in this formulation, a carrier-free antibody format is required.
Storage Instructions	Store at -20°C for one year. For short term storage and frequent use, store at 4°C for up to one month. Avoid repeated freeze-thaw cycles.
Host	Rabbit
Uniprot ID	Q04743

### Technical Details

Immunogen	The antiserum was produced against synthesized peptide derived from human EMX2. AA range:91-140
Isotype	IgG
Form	Liquid
Concentration	1 mg/ml
Purification	The antibody was affinity-purified from rabbit antiserum by affinity-chromatography using epitope-specific immunogen.
Suggested Dilutions	IHC 1:100-1:300 ELISA 1:20000 IF 1:50-200

## Anti-Homeobox protein EMX2 Emx2 Antibody (A04322-2) Images

---



Immunohistochemistry validation of EMX2 using Anti-Homeobox protein EMX2 Emx2 Antibody (A04322-2). Immunohistochemical analysis of paraffin-embedded Human brain. Antibody was diluted at 1:100 (4°C)

### Submit a product review to [Biocompare.com](https://www.biocompare.com)

---

Submit a review of this product to [Biocompare.com](https://www.biocompare.com) to receive a \$20 Amazon.com giftcard! Your reviews help your fellow scientists make the right decisions. Thank you for your contribution.



Anti-Homeobox protein EMX2 Emx2 Antibody

For Research Use Only. Not for use in diagnostic procedures.