

Anti-TLX1 Antibody

Catalog Number: A04342

About TLX1

The Hox proteins play a role in patterns of embryonic development and cellular differentiation by regulating downstream target genes. TLX1, also called homeobox11 (HOX11), as it is located outside of the four mammalian Hox clusters, is a DNA-binding nuclear transcription factor. TLX1 encodes a homeobox-domain containing protein and is containing a glycine and proline-rich amino terminus. TLX1 is required for maintenance of the developing spleen and cell survival. TLX1 is highly expressed in T-cell leukemia and lymphoid neoplasias as a result of translocation. TLX1-deficient mice have no spleen.

Overview

Product Name	Anti-TLX1 Antibody
Reactive Species	Human, Mouse, Rat
Description	Boster Bio Anti-TLX1 Antibody (Catalog # A04342). Tested in ELISA, WB, IHC-P applications. This antibody reacts with Human, Mouse, Rat.
Application	ELISA, IHC-P, WB
Clonality	Polyclonal Clone: SK7
Formulation	TLX1 Antibody is supplied in PBS containing 0.02% sodium azide.
Storage Instructions	TLX1 antibody can be stored at 4°C for three months and -20°C, stable for up to one year.
Host	Rabbit
Uniprot ID	P31314

Technical Details

Immunogen	TLX1 antibody was raised against a 16 amino acid peptide near the amino terminus of human TLX1. The immunogen is located within the first 50 amino acids of TLX1.
Predicted Reactive Species	Bovine, Mouse
Cross Reactivity	Multiple isoforms of TLX1 exist due to alternative splicing events. TLX1 antibody is predicted to not cross-react with other TLX proteins.
Isotype	IgG
Form	Liquid
Concentration	1 mg/mL
Purification	TLX1 Antibody is affinity chromatography purified via peptide column.

Suggested Dilutions

Dilute the sample so that the expected range of concentrations fall within the detection range of this kit.

If the expected range of concentration is unknown, a pilot test should be conducted to decide the optimal dilution ratio for your samples.

Some PubMed article(s) citing the expression level of this target are as follows:

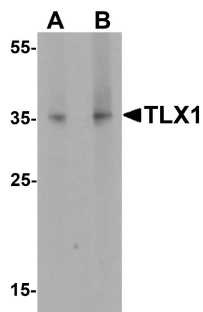
Boster Bio's internal QC testing used:

TLX1 antibody can be used for detection of TLX1 by Western blot at 1 - 2 ug/mL.

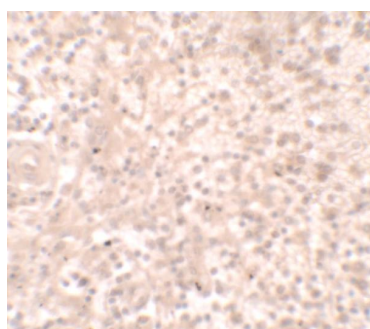
Antibody validated: Western Blot in mouse samples and Immunohistochemistry in human samples.

All other applications and species not yet tested. Optimal dilutions for each application should be determined by the researcher.

Anti-TLX1 Antibody (A04342) Images



Western blot analysis of TLX1 in mouse spleen tissue lysate with TLX1 antibody at (A) 1 ug/mL and (B) 2 ug/mL.



Immunohistochemistry of TLX1 in human spleen tissue with TLX1 antibody at 2.5 ug/ml.

Submit a product review to Biocompare.com

Submit a review of this product to Biocompare.com to receive a \$20 Amazon.com giftcard! Your reviews help your fellow scientists make the right decisions. Thank you for your contribution.



Anti-TLX1 Antibody