

Anti-Sprouty-4 SPRY4 Antibody

Catalog Number: A04343

About SPRY4

Sprouty-4 (also known as SPRY4) is an inhibitor of the insulin receptor and EGFR-transduced mitogen-activated protein kinase (MAPK) signaling pathway downstream of FGF and EGF receptor tyrosine kinase activation. It is positioned upstream of RAS activation and impairs the formation of active GTP-RAS. SPRY4 is widely expressed, with different isoforms. The protein consists of 322 amino acids, with a cysteine-rich region, Src homology 3 binding regions, proline-rich regions, and a PEST sequence. It is expressed predominantly in the cytoplasm. Northern results show bands across most tissues, with strongest expression in heart, brain, placenta, lung, and intestine.

Overview

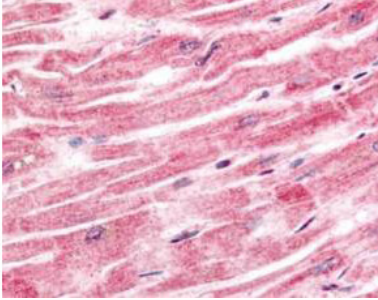
Product Name	Anti-Sprouty-4 SPRY4 Antibody
Reactive Species	Human, Mouse
Description	Boster Bio Anti-Sprouty-4 SPRY4 Antibody (Catalog # A04343). Tested in ELISA, IHC, WB applications. This antibody reacts with Human, Mouse.
Application	ELISA, IHC, WB
Clonality	Polyclonal
Formulation	0.02 M Potassium Phosphate, 0.15 M Sodium Chloride, pH 7.2, 0.01% (w/v) Sodium Azide
Storage Instructions	Store vial at -20°C prior to opening. Aliquot contents and freeze at -20°C or below for extended storage. Avoid cycles of freezing and thawing. Centrifuge product if not completely clear after standing at room temperature. This product is stable for several weeks at 4°C as an undiluted liquid. Dilute only prior to immediate use. Expiration date is one (1) year from date of opening. (Ship on dry ice.)
Host	Rabbit
Uniprot ID	Q9C004

Technical Details

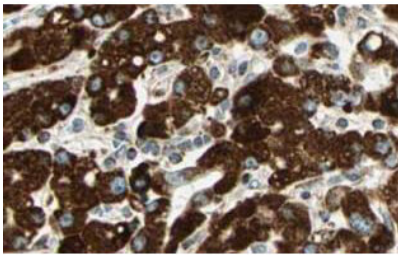
Immunogen	This affinity purified antibody was prepared from whole rabbit serum produced by repeated immunizations with a synthetic peptide corresponding to a C-Terminal region near amino acids 275-299 of Human Sprouty-4 protein.
Predicted Reactive Species	Chimpanzee
Cross Reactivity	No cross reactivity with other proteins.
Isotype	IgG
Form	Liquid (sterile filtered)

Concentration	1.1 mg/mL by UV absorbance at 280 nm
Purification	This affinity purified antibody is directed against human Sprouty-4 protein. The product was affinity purified from monospecific antiserum by immunoaffinity purification. A BLAST analysis was used to suggest reactivity with this protein from human and chimpanzee based on 100% homology for the immunogen sequence. Cross-reactivity is expected with Sprouty-4.
Suggested Dilutions	ELISA: 1:3,000 - 1:12,000 IHC: 1 µg/ml to 10 µg/ml WB: 1:100 - 1:1,000 This affinity purified antibody has been tested for use in ELISA, immunohistochemistry and western blot. Specific conditions for reactivity should be optimized by the end user. Expect a band (maybe a doublet) ~35 kDa in size corresponding to Sprouty-4 by western blotting in the appropriate cell lysate or extract. Some non-specific banding may be observed using this antibody.

Anti-Sprouty-4 SPRY4 Antibody (A04343) Images



Immunohistochemistry of Rabbit anti-Sprouty-4 antibody. Tissue: human heart tissue. Fixation: formalin fixed paraffin embedded. Antigen retrieval: not required. Primary antibody: Sprouty-4 antibody at 2.5 µg/ml for 1 h at RT. Secondary antibody: Peroxidase rabbit secondary antibody at 1:10,000 for 45 min at RT. Localization: Sprouty-4 is cytoplasmic. Staining: Sprouty-4 as precipitated red signal with hematoxylin purple nuclear counterstain.



Immunohistochemistry of Rabbit anti-Sprouty-4 antibody. Tissue: human liver tissue. Fixation: formalin fixed paraffin embedded. Antigen retrieval: not required. Primary antibody: Sprouty-4 antibody at 2.5 µg/mL for 1 h at RT. Secondary antibody: Peroxidase rabbit secondary antibody at 1:10,000 for 45 min at RT. Localization: Sprouty-4 is cytoplasmic. Staining: Sprouty-4 as precipitated brown with blue nuclear counterstain.



Western Blot of Rabbit anti-Sprouty-4 antibody. Lane 1: HeLa . Lane 2: SW13. Lane 3: C2C12 . Load: 30 µg per lane. Primary antibody: Sprouty 4 antibody at 1:100 for overnight at 4°C. Secondary antibody: IRDye800™ rabbit secondary antibody at 1:5,000 for 45 min at RT. Block: 5% BLOTTO overnight at 4°C. Predicted/Observed size: a doublet band ~35 kDa corresponding to human Sprouty-4. Other band(s): none.

Submit a product review to Biocompare.com

Submit a review of this product to Biocompare.com to receive a \$20 Amazon.com giftcard! Your reviews help your fellow scientists make the right decisions. Thank you for your contribution.



Anti-Sprouty-4 SPRY4 Antibody

For Research Use Only. Not for use in diagnostic procedures.