

Anti-Separase Antibody

Catalog Number: A04364

About ESPL1

Thymidylate synthase catalyzes the methylation of deoxyuridylate to deoxythymidylate using 5,10-methylenetetrahydrofolate (methylene-THF) as a cofactor. This function maintains the dTMP (thymidine-5-prime monophosphate) pool critical for DNA replication and repair. The enzyme has been of interest as a target for cancer chemotherapeutic agents. It is considered to be the primary site of action for 5-fluorouracil, 5-fluoro-2-prime-deoxyuridine, and some folate analogs. Expression of this gene and that of a naturally occurring antisense transcript rTS alpha vary inversely when cell-growth progresses from late-log to plateau phase. Diseases associated with Thymidylate synthase include Rectal Neoplasm and Dihydropyrimidine Dehydrogenase Deficiency. Anti-Thymidylate synthase is useful for researchers interested in Circadian Rhythm, Metabolism and cell cycle research.

Overview

Product Name	Anti-Separase Antibody
Reactive Species	Human, Mouse
Description	Boster Bio Anti-Separase Antibody catalog # A04364. Tested in IF, IHC, WB applications. This antibody reacts with Human, Mouse.
Application	IF, IHC, WB
Clonality	Polyclonal 3F8
Formulation	Liquid in PBS containing 50% glycerol, 0.5% BSA and 0.02% sodium azide.
Storage Instructions	Store at -20°C for one year. For short term storage and frequent use, store at 4°C for up to one month. Avoid repeated freeze-thaw cycles.
Host	Rabbit
Uniprot ID	Q14674

Technical Details

Immunogen	Synthesized peptide derived from human Separase around the non-phosphorylation site of S801.
Predicted Reactive Species	Bovine, Canine, Equine, Guinea Pig, Pig, Rabbit
Isotype	IgG
Form	Liquid
Concentration	This antibody's concentration is >0.5mg/ml.
Purification	Immunogen affinity purified

Suggested Dilutions

Dilute the sample so that the expected range of concentrations fall within the detection range of this kit.

If the expected range of concentration is unknown, a pilot test should be conducted to decide the optimal dilution ratio for your samples.

Some PubMed article(s) citing the expression level of this target are as follows:

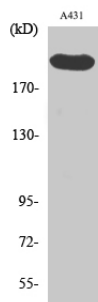
Boster Bio's internal QC testing used:

WB, 1:500-1:2000

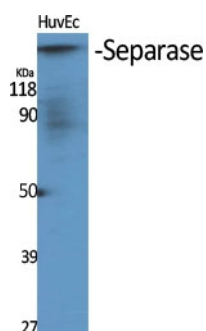
IHC, 1:100-1:300

IF, 1:200-1:1000

Anti-Separase Antibody (A04364) Images



Western Blot (WB) analysis of A431 cells using Separase Polyclonal antibody.



Western Blot (WB) analysis of specific cells using Separase Polyclonal antibody.

Submit a product review to Biocompare.com

Submit a review of this product to Biocompare.com to receive a \$20 Amazon.com giftcard! Your reviews help your fellow scientists make the right decisions. Thank you for your contribution.



Anti-Separase Antibody