

Anti-HMGCS2 Antibody (C-term)

Catalog Number: A04371-1

About HMGCS2

HMGCS2 belongs to the HMG-CoA synthase family. It is a mitochondrial enzyme that catalyzes the first reaction of ketogenesis, a metabolic pathway that provides lipid-derived energy for various organs during times of carbohydrate deprivation, such as fasting.

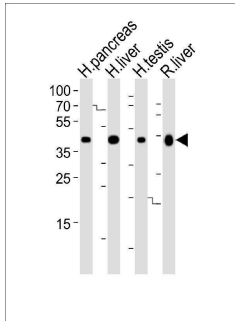
Overview

Product Name	Anti-HMGCS2 Antibody (C-term)
Reactive Species	Human
Description	Boster Bio Anti-HMGCS2 Antibody (C-term) (Catalog # A04371-1). Tested in WB, Flow Cytometry, IHC-P application(s). This antibody reacts with Human.
Application	Flow Cytometry, IHC-P, WB
Clonality	Polyclonal
Formulation	Purified polyclonal antibody supplied in PBS with 0.09% (W/V) sodium azide.
Storage Instructions	Maintain refrigerated at 2-8°C for up to 2 weeks. For long-term storage, store at -20°C in small aliquots to prevent freeze-thaw cycles.
Host	Rabbit
Uniprot ID	P54868

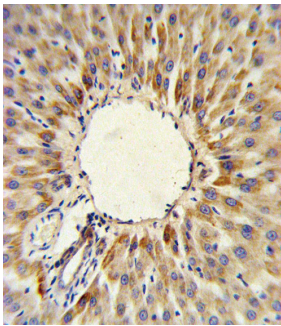
Technical Details

Immunogen	This HMGCS2 antibody is generated from rabbits immunized with a KLH conjugated synthetic peptide between 478-508 amino acids from the C-terminal region of human HMGCS2.
Predicted Reactive Species	Bovine, Chicken, Mouse, Pig, Rat
Isotype	Rabbit IgG
Purification	This antibody is prepared by Saturated Ammonium Sulfate (SAS) precipitation followed by dialysis against PBS.
Suggested Dilutions	WB: 1:1000 IHC-P: 1:10-1:50 FC: 1:10-1:50

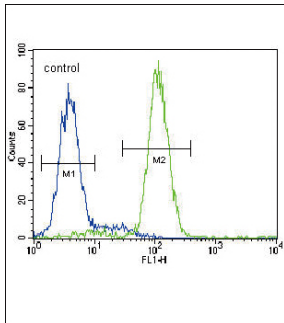
Anti-HMGCS2 Antibody (C-term) (A04371-1) Images



Western blot analysis of lysates from human pancreas, liver, testis and rat liver tissue lysate (from left to right), using HMGCS2 Antibody (C-term). A04371-1 was diluted at 1:1000 at each lane. A goat anti-rabbit IgG H&L (HRP) at 1:10000 dilution was used as the secondary antibody. Lysates at 35ug per lane.



HMGCS2 Antibody (C-term) IHC analysis in formalin fixed and paraffin embedded human hepatocarcinoma followed by peroxidase conjugation of the secondary antibody and DAB staining. This data demonstrates the use of the HMGCS2 Antibody (C-term) for immunohistochemistry. Clinical relevance has not been evaluated.



HMGCS2 Antibody (C-term) flow cytometric analysis of HepG2 cells (right histogram) compared to a negative control cell (left histogram). FITC-conjugated goat-anti-rabbit secondary antibodies were used for the analysis.

Submit a product review to [Biocompare.com](https://www.biocompare.com)

Submit a review of this product to [Biocompare.com](https://www.biocompare.com) to receive a \$20 Amazon.com giftcard! Your reviews help your fellow scientists make the right decisions. Thank you for your contribution.



Anti-HMGCS2 Antibody (C-term)

For Research Use Only. Not for use in diagnostic procedures.