

Anti-PA28 gamma PSME3 Monoclonal Antibody

Catalog Number: A04375

About PSME3

Thymidylate synthase catalyzes the methylation of deoxyuridylate to deoxythymidylate using 5,10-methylenetetrahydrofolate (methylene-THF) as a cofactor. This function maintains the dTMP (thymidine-5-prime monophosphate) pool critical for DNA replication and repair. The enzyme has been of interest as a target for cancer chemotherapeutic agents. It is considered to be the primary site of action for 5-fluorouracil, 5-fluoro-2-prime-deoxyuridine, and some folate analogs. Expression of this gene and that of a naturally occurring antisense transcript rTS alpha vary inversely when cell-growth progresses from late-log to plateau phase. Diseases associated with Thymidylate synthase include Rectal Neoplasm and Dihydropyrimidine Dehydrogenase Deficiency. Anti-Thymidylate synthase is useful for researchers interested in Circadian Rhythm, Metabolism and cell cycle research.

Overview

Product Name	Anti-PA28 gamma PSME3 Monoclonal Antibody
Reactive Species	Human, Mouse, Pig
Description	Boster Bio Anti-PA28 gamma PSME3 Monoclonal Antibody catalog # A04375. Tested in WB applications. This antibody reacts with Human, Mouse, Pig.
Application	WB
Clonality	Monoclonal 3F8
Formulation	Purified mouse monoclonal in buffer containing 0.1M Tris-Glycine (pH 7.4, 150 mM NaCl) with 0.2% sodium azide, 50% glycerol.
Storage Instructions	Store at -20°C for one year. For short term storage and frequent use, store at 4°C for up to one month. Avoid repeated freeze-thaw cycles.
Host	Mouse
Uniprot ID	P61289

Technical Details

Immunogen	Synthesized peptide derived from the Internal region of human PFKM.
Predicted Reactive Species	Bovine, Canine, Equine, Guinea Pig, Pig, Rabbit
Isotype	IgG
Form	Liquid
Concentration	1 mg/ml
Purification	Protein A purified

Suggested Dilutions

Dilute the sample so that the expected range of concentrations fall within the detection range of this kit.

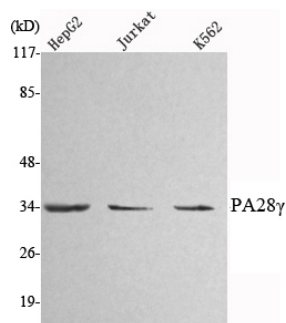
If the expected range of concentration is unknown, a pilot test should be conducted to decide the optimal dilution ratio for your samples.

Some PubMed article(s) citing the expression level of this target are as follows:

Boster Bio's internal QC testing used:

WB, 1:1000-1:2000

Anti-PA28 gamma PSME3 Monoclonal Antibody (A04375) Images



Western Blot (WB) analysis using PA28gamma Monoclonal antibody against HepG2, Jurkat, K562 cell lysate.

Submit a product review to Biocompare.com

Submit a review of this product to Biocompare.com to receive a \$20 Amazon.com giftcard! Your reviews help your fellow scientists make the right decisions. Thank you for your contribution.



Anti-PA28 gamma PSME3 Monoclonal Antibody