

## Anti-Protein bicaudal D homolog 2 BICD2 Antibody

Catalog Number: A04406

### About BICD2

BICD2 is the second human homolog discovered to the Drosophila Bicaudal-D protein that forms part of the cytoskeleton and mediates the correct sorting of mRNAs for oocyte- and axis-determining factors during oogenesis. Similar to the highly homologous protein BICD1, BICD2 can bind to dynein-dynactin complex, primarily through the dynamitin subunit of dynactin. The C-terminus of BICD2 targets the protein to the Golgi complex while the N-terminal domain of BICD2 co-immunoprecipitates with cytoplasmic dynein, suggesting BICD2 plays a role in the dynein-dynactin interaction on the surface of membranous organelles. Mice engineered to overexpress the BICD2 amino terminal domain in neurons developed amyotrophic lateral sclerosis (ALS)-like features such as Golgi fragmentation, neurofilament swelling in proximal axons, etc., suggesting that impaired dynein/dynactin function may explain some of the pathological features observed in ALS patients.

### Overview

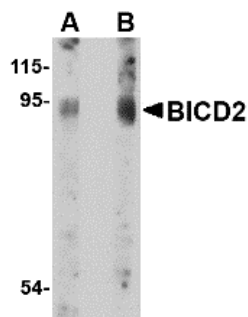
Product Name	Anti-Protein bicaudal D homolog 2 BICD2 Antibody
Reactive Species	Human, Mouse, Rat
Description	Boster Bio Anti-Protein bicaudal D homolog 2 BICD2 Antibody (Catalog # A04406). Tested in ELISA, WB applications. This antibody reacts with Human, Mouse, Rat.
Application	ELISA, WB
Clonality	Polyclonal
Formulation	BICD2 Antibody is supplied in PBS containing 0.02% sodium azide.
Storage Instructions	BICD2 antibody can be stored at 4°C for three months and -20°C, stable for up to one year. Avoid repeated freeze-thaw cycles. Antibodies should not be exposed to prolonged high temperatures.
Host	Rabbit
Uniprot ID	Q8TD16

### Technical Details

Immunogen	BICD2 antibody was raised against a 13 amino acid synthetic peptide from near the carboxy terminus of human BICD2. The immunogen is located within the last 50 amino acids of BICD2.
Predicted Reactive Species	Mouse, Rat
Cross Reactivity	This BICD2 antibody will not cross-react with BICD1.
Isotype	IgG
Form	Liquid
Concentration	1 mg/mL

Purification	BICD2 Antibody is affinity chromatography purified via peptide column.
Suggested Dilutions	BICD2 antibody can be used for detection of BICD2 by Western blot at 1 - 2 ug/mL. Antibody validated: Western Blot in human samples. All other applications and species not yet tested. Optimal dilutions for each application should be determined by the researcher.

## Anti-Protein bicaudal D homolog 2 BICD2 Antibody (A04406) Images



Western blot analysis of BICD2 in A549 cell lysate with BICD2 antibody at (A) 1 and (B) 2 ug/mL.

### Submit a product review to Biocompare.com

Submit a review of this product to Biocompare.com to receive a \$20 Amazon.com giftcard! Your reviews help your fellow scientists make the right decisions. Thank you for your contribution.



Anti-Protein bicaudal D homolog 2 BICD2 Antibody

For Research Use Only. Not for use in diagnostic procedures.