

## Anti-Protein DEK DEK Antibody

Catalog Number: A04410

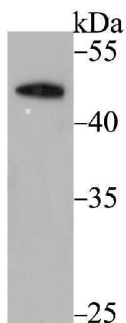
### Overview

|                      |  |
|----------------------|--|
| Product Name         | Anti-Protein DEK DEK Antibody  |
| Reactive Species     | Human  |
| Description          | Boster Bio Anti-Protein DEK DEK Antibody catalog # A04410. Tested in WB,IP applications. This antibody reacts with Human.                  |
| Application          | IP, WB   |
| Clonality            | Polyclonal   |
| Formulation          | Rabbit IgG, 1mg/ml in PBS with 0.02% sodium azide, 50% glycerol, pH7.2   |
| Storage Instructions | Store at -20°C for one year. For short term storage and frequent use, store at 4°C for up to one month. Avoid repeated freeze-thaw cycles. |
| Host                 | Rabbit   |
| Uniprot ID           | P35659   |

### Technical Details

|                     |  |
|---------------------|--|
| Immunogen           | Recombinant protein corresponding to C-terminal human DEK. |
| Isotype             | IgG  |
| Form                | Liquid   |
| Concentration       | 1 mg/ml  |
| Purification        | ProA affinity purified                                     |
| Suggested Dilutions | WB: 1:500-1:1,000<br>IP: 1:50-1:100                        |

## Anti-Protein DEK DEK Antibody (A04410) Images



Western blot analysis of DEK on A431 cell lysate using anti-DEK antibody at 1/500 dilution.

### Submit a product review to Biocompare.com

Submit a review of this product to Biocompare.com to receive a \$20 Amazon.com giftcard! Your reviews help your fellow scientists make the right decisions. Thank you for your contribution.



Anti-Protein DEK DEK Antibody

For Research Use Only. Not for use in diagnostic procedures.