

Anti-MLK3 (phospho-T277/S281) MAP3K11 Antibody

Catalog Number: A04412T277S281

About MAP3K11

Angiogenesis inhibitor. Inhibits migration, proliferation and network formation by endothelial cells as well as angiogenesis. This inhibitory effect is selective to endothelial cells as it does not affect the migration of smooth muscle cells or fibroblasts. Does not affect the proliferation of cancer cells in vitro, but inhibits tumor growth and tumor angiogenesis. Acts in an autocrine manner. Inhibits artery neointimal formation and macrophage infiltration. Exhibits heparin-binding activity.

Kikuno R., DNA Res. 6:197-205(1999).

Bechtel S., BMC Genomics 8:399-399(2007).

Heilig R., Nature 421:601-607(2003).

Overview

Product Name	Anti-MLK3 (phospho-T277/S281) MAP3K11 Antibody
Reactive Species	Human
Description	Boster Bio Anti-MLK3 (phospho-T277/S281) MAP3K11 Antibody catalog # A04412T277S281. Tested in WB applications. This antibody reacts with Human.
Application	WB
Clonality	Polyclonal
Formulation	Rabbit IgG, 1mg/ml in PBS with 0.02% sodium azide, 50% glycerol, pH7.2
Storage Instructions	Store at -20°C for one year. For short term storage and frequent use, store at 4°C for up to one month. Avoid repeated freeze-thaw cycles.
Host	Rabbit
Uniprot ID	Q16584

Technical Details

Immunogen	Synthesized peptide derived from human MLK3 around the phosphorylation site of S674.
Predicted Reactive Species	Boar, Bovine, Canine, Golden Hamster
Isotype	IgG
Form	Liquid
Concentration	1 mg/ml
Purification	The antibody was affinity-purified from rabbit antiserum by affinity-chromatography using epitope-

specific immunogen and the purity is > 95% (by SDS-PAGE).

Suggested Dilutions

Dilute the sample so that the expected range of concentrations fall within the detection range of this kit.

If the expected range of concentration is unknown, a pilot test should be conducted to decide the optimal dilution ratio for your samples.

Some PubMed article(s) citing the expression level of this target are as follows:

Boster Bio's internal QC testing used:

WB: 1:1000-1:2000

Anti-MLK3 (phospho-T277/S281) MAP3K11 Antibody (A04412T277S281) Images

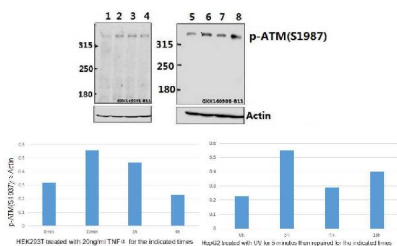


Figure 1. Western blotting validation for Anti-MLK3 (phospho-T277/S281) MAP3K11 Antibody A04412T277S281

Western blot (WB) analysis of p-MLK3 (T277/S281)

polyclonal antibody at 1:500 dilution

Lane1:HEK293T whole cell lysate

Lane2:NIH-3T3 whole cell lysate

Lane3:PC12 whole cell lysate

Electrophoresis was performed on a SDS-PAGE gel. To determine SDS-PAGE gel concentration

Submit a product review to Biocompare.com

Submit a review of this product to Biocompare.com to receive a \$20 Amazon.com giftcard! Your reviews help your fellow scientists make the right decisions. Thank you for your contribution.



Anti-MLK3 (phospho-T277/S281) MAP3K11 Antibody