

## Anti-MSRA Antibody Picoband®

Catalog Number: A04413-3

### About MSRA

Enables peptide-methionine (S)-S-oxide reductase activity. Predicted to be involved in cellular response to oxidative stress. Located in mitochondrion. Is expressed in several structures, including musculoskeletal system; nervous system; respiratory system; sensory organ; and testis. Orthologous to human MSRA (methionine sulfoxide reductase A).

### Overview

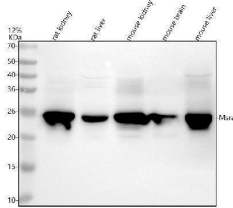
Product Name	Anti-MSRA Antibody Picoband®
Reactive Species	Human, Mouse, Rat
Description	Boster Bio Anti-MSRA Antibody Picoband® catalog # A04413-3. Tested in WB, Flow Cytometry, ELISA applications. This antibody reacts with Human, Mouse, Rat. The brand Picoband indicates this is a premium antibody that guarantees superior quality, high affinity, and strong signals with minimal background in Western blot applications. Only our best-performing antibodies are designated as Picoband, ensuring unmatched performance.
Application	ELISA, Flow Cytometry, WB
Clonality	Polyclonal
Formulation	Each vial contains 4 mg Trehalose, 0.9 mg NaCl, 0.2 mg Na <sub>2</sub> HPO <sub>4</sub> .
Storage Instructions	At -20°C for one year from date of receipt. After reconstitution, at 4°C for one month. It can also be aliquotted and stored frozen at -20°C for six months. Avoid repeated freezing and thawing.
Host	Rabbit
Uniprot ID	Q9D6Y7

### Technical Details

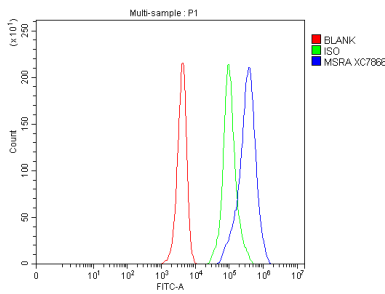
Immunogen	E.coli-derived mouse MSRA recombinant protein (Position: M1-D215). Mouse MSRA shares 85.3% and 83.1% amino acid (aa) sequence identity with human and rat MSRA, respectively.
Form	Lyophilized
Concentration	Adding 0.2 ml of distilled water will yield a concentration of 500 ug/ml.
Purification	Immunogen affinity purified.
Suggested Dilutions	Western blot, 0.25-0.5 ug/ml, Human, Mouse, Rat Flow Cytometry (Fixed), 1-3 ug/1x10 <sup>6</sup> cells, Human ELISA, 0.1-0.5 ug/ml



## Anti-MSRA Antibody Picoband® (A04413-3) Images



Western blot analysis of MSRA using anti-MSRA antibody (A04413-3). Electrophoresis was performed on a 12% SDS-PAGE gel at 80V (Stacking gel) / 120V (Resolving gel) for 2 hours. The sample well of each lane was loaded with 30 ug of sample under reducing conditions. Lane 1: rat kidney tissue lysates, Lane 2: rat liver tissue lysates, Lane 3: mouse kidney tissue lysates, Lane 4: mouse brain tissue lysates, Lane 5: mouse liver tissue lysates. After electrophoresis, proteins were transferred to a nitrocellulose membrane at 150 mA for 50-90 minutes. Blocked the membrane with 5% non-fat milk/TBS for 1.5 hour at RT. The membrane was incubated with rabbit anti-MSRA antigen affinity purified polyclonal antibody (A04413-3) at 0.5 ug/mL overnight at 4°C, then washed with TBS-0.1%Tween 3 times with 5 minutes each and probed with a goat anti-rabbit IgG-HRP secondary antibody at a dilution of 1:5000 for 1.5 hour at RT. The signal is developed using an ECL Plus Western Blotting Substrate (Catalog # AR1196-200) with Tanon 5200 system. A specific band was detected for MSRA at approximately 24 kDa. The expected band size for MSRA is at 26 kDa.



Flow Cytometry analysis of HEPA1-6 cells using anti-MSRA antibody (A04413-3). Overlay histogram showing HEPA1-6 cells stained with A04413-3 (Blue line). To facilitate intracellular staining, cells were fixed with 4% paraformaldehyde and permeabilized with permeabilization buffer. The cells were blocked with 10% normal goat serum. And then incubated with rabbit anti-MSRA Antibody (A04413-3, 1 ug/1x10<sup>6</sup> cells) for 30 min at 20°C. DyLight®488 conjugated goat anti-rabbit IgG (BA1127, 5-10 ug/1x10<sup>6</sup> cells) was used as secondary antibody for 30 minutes at 20°C. Isotype control antibody (Green line) was rabbit IgG (1 ug/1x10<sup>6</sup>) used under the same conditions. Unlabelled sample without incubation with primary antibody and secondary antibody (Red line) was used as a blank control.

### Submit a product review to Biocompare.com

Submit a review of this product to Biocompare.com to receive a \$20 Amazon.com giftcard! Your reviews help your fellow scientists make the right decisions. Thank you for your contribution.



### Anti-MSRA Antibody

For Research Use Only. Not for use in diagnostic procedures.