

Anti-RRS1 (R286) Antibody

Catalog Number: A04418-1

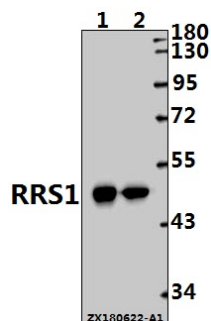
Overview

| | |
|----------------------|--|
| Product Name | Anti-RRS1 (R286) Antibody |
| Reactive Species | Human |
| Description | Boster Bio Anti-RRS1 (R286) Antibody catalog # A04418-1. Tested in WB,IHC applications. This antibody reacts with Human. |
| Application | IHC, WB |
| Clonality | Polyclonal |
| Formulation | Rabbit IgG, 1mg/ml in PBS with 0.02% sodium azide, 50% glycerol, pH7.2 |
| Storage Instructions | Store at -20°C for one year. For short term storage and frequent use, store at 4°C for up to one month. Avoid repeated freeze-thaw cycles. |
| Host | Rabbit |
| Uniprot ID | Q15050 |

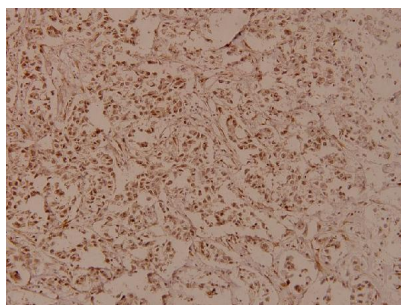
Technical Details

| | |
|---------------------|---|
| Immunogen | Synthetic peptide, corresponding to amino acids 255-307 of Human RRS1. |
| Isotype | IgG |
| Form | Liquid |
| Concentration | 1 mg/ml |
| Purification | The antibody was affinity-purified from rabbit antiserum by affinity-chromatography using epitope-specific immunogen and the purity is > 95% (by SDS-PAGE). |
| Suggested Dilutions | WB: 1:500-1:1000 IHC: 1:50-1:200 |

Anti-RRS1 (R286) Antibody (A04418-1) Images



Western blot (WB) analysis of RRS1 (R286) pAb at 1:1000 dilution Lane1:EC9706 whole cell lysate(10ug) Lane2:A375 whole cell lysate(10ug)



Immunohistochemistry (IHC) analyzes of RRS1 (R286) pAb in paraffin-embedded human breast carcinoma tissue at 1:100.

Submit a product review to Biocompare.com

Submit a review of this product to Biocompare.com to receive a \$20 Amazon.com giftcard! Your reviews help your fellow scientists make the right decisions. Thank you for your contribution.



Anti-RRS1 (R286) Antibody

For Research Use Only. Not for use in diagnostic procedures.