

## Anti-Centrosomal protein kizuna KIZ Antibody

Catalog Number: A04420

### About KIZ

Angiogenesis inhibitor. Inhibits migration, proliferation and network formation by endothelial cells as well as angiogenesis. This inhibitory effect is selective to endothelial cells as it does not affect the migration of smooth muscle cells or fibroblasts. Does not affect the proliferation of cancer cells in vitro, but inhibits tumor growth and tumor angiogenesis. Acts in an autocrine manner. Inhibits artery neointimal formation and macrophage infiltration. Exhibits heparin-binding activity.

Kikuno R., DNA Res. 6:197-205(1999).

Bechtel S., BMC Genomics 8:399-399(2007).

Heilig R., Nature 421:601-607(2003).

### Overview

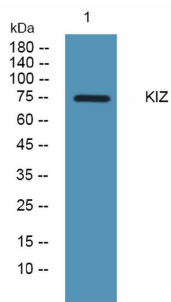
Product Name	Anti-Centrosomal protein kizuna KIZ Antibody
Reactive Species	Human
Description	Boster Bio Anti-Centrosomal protein kizuna KIZ Antibody catalog # A04420. Tested in ELISA, WB applications. This antibody reacts with Human.
Application	ELISA, WB
Clonality	Polyclonal
Formulation	Liquid form in PBS containing 50% glycerol, and 0.02% sodium azide.
Storage Instructions	Store at -20°C for one year. For short term storage and frequent use, store at 4°C for up to one month. Avoid repeated freeze-thaw cycles.
Host	Rabbit
Uniprot ID	Q2M2Z5

### Technical Details

Immunogen	Synthesized peptide derived from human KIZ protein.
Predicted Reactive Species	Boar, Bovine, Canine, Golden Hamster
Isotype	IgG
Form	Liquid
Concentration	1 mg/ml
Purification	KIZ antibody was affinity-purified from rabbit antiserum by affinity-chromatography using epitope-

	specific immunogen.
Suggested Dilutions	<p>Dilute the sample so that the expected range of concentrations fall within the detection range of this kit.</p> <p>If the expected range of concentration is unknown, a pilot test should be conducted to decide the optimal dilution ratio for your samples.</p> <p>Some PubMed article(s) citing the expression level of this target are as follows:</p> <p>Boster Bio's internal QC testing used:</p> <p>WB 1:500-2000</p> <p>ELISA 1:5000-20000</p>

## Anti-Centrosomal protein kizuna KIZ Antibody (A04420) Images



Western blot analysis of lysates from KB cells, primary antibody was diluted at 1:1000, 4°C over night

### Submit a product review to Biocompare.com

Submit a review of this product to Biocompare.com to receive a \$20 Amazon.com giftcard! Your reviews help your fellow scientists make the right decisions. Thank you for your contribution.



Anti-Centrosomal protein kizuna KIZ Antibody