

Anti-IL17E/IL25 Antibody Picoband®

Catalog Number: A04429-1

About IL25

CAP/Ponsinprotein, also known as Sorbin and SH3 domain-containing protein 1 is a protein that in humans is encoded by the SORBS1 gene. It is mapped to 10q24.1. This gene encodes a CBL-associated protein which functions in the signaling and stimulation of insulin. Mutations in this gene may be associated with human disorders of insulin resistance. Alternative splicing results in multiple transcript variants.

Overview

Product Name	Anti-IL17E/IL25 Antibody Picoband®
Reactive Species	Human, Mouse, Rat
Description	Boster Bio Anti-IL17E/IL25 Antibody Picoband® catalog # A04429-1. Tested in ELISA, WB applications. This antibody reacts with Human, Mouse, Rat. The brand Picoband indicates this is a premium antibody that guarantees superior quality, high affinity, and strong signals with minimal background in Western blot applications. Only our best-performing antibodies are designated as Picoband, ensuring unmatched performance.
Application	WB, ELISA (Cap)
Clonality	Polyclonal
Formulation	Each vial contains 4mg Trehalose, 0.9mg NaCl, 0.2mg Na ₂ HPO ₄ , 0.05mg NaN ₃ .
Storage Instructions	Store at -20°C for one year from date of receipt. After reconstitution, at 4°C for one month. It can also be aliquotted and stored frozen at -20°C for six months. Avoid repeated freeze-thaw cycles.
Host	Rabbit
Uniprot ID	Q9H293

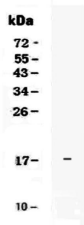
Technical Details

Immunogen	E. coli-derived human IL17E recombinant protein (Position: Y33-G177).
Recommended Detection Systems	Boster recommends Enhanced Chemiluminescent Kit with anti-Rabbit IgG (EK1002) for Western blot.
Cross Reactivity	No cross-reactivity with other proteins.
Isotype	Rabbit IgG
Form	Lyophilized
Concentration	Adding 0.2 ml of distilled water will yield a concentration of 500 ug/ml.
Purification	Immunogen affinity purified.

Suggested Dilutions

Western blot, 0.1-0.5ug/ml
ELISA (Cap), 1-5ug/ml

Anti-IL17E/IL25 Antibody Picoband® (A04429-1) Images



Western blot analysis of IL17E using anti-IL17E antibody (A04429-1). Electrophoresis was performed on a 5-20% SDS-PAGE gel at 70V (Stacking gel) / 90V (Resolving gel) for 2-3 hours. Lane 1: recombinant human IL25 protein 1ng. After Electrophoresis, proteins were transferred to a Nitrocellulose membrane at 150mA for 50-90 minutes. Blocked the membrane with 5% Non-fat Milk/ TBS for 1.5 hour at RT. The membrane was incubated with rabbit anti-IL17E antigen affinity purified polyclonal antibody (Catalog # A04429-1) at 0.5 ug/mL overnight at 4°C, then washed with TBS-0.1%Tween 3 times with 5 minutes each and probed with a goat anti-rabbit IgG-HRP secondary antibody at a dilution of 1:10000 for 1.5 hour at RT. The signal is developed using an Enhanced Chemiluminescent detection (ECL) kit (Catalog # EK1002) with Tanon 5200 system. A specific band was detected for IL17E at approximately 17KD. The expected band size for IL17E is at 17KD.

Submit a product review to Biocompare.com

Submit a review of this product to Biocompare.com to receive a \$20 Amazon.com giftcard! Your reviews help your fellow scientists make the right decisions. Thank you for your contribution.



Anti-IL17E/IL25 Antibody

For Research Use Only. Not for use in diagnostic procedures.