

Anti-Tyrosine-protein kinase BAZ1B BAZ1B Antibody

Catalog Number: A04438

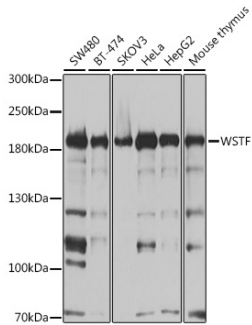
Overview

Product Name	Anti-Tyrosine-protein kinase BAZ1B BAZ1B Antibody
Reactive Species	Human, Mouse, Rat
Description	Boster Bio Anti-Tyrosine-protein kinase BAZ1B BAZ1B Antibody catalog # A04438. Tested in WB,IHC applications. This antibody reacts with Human,Mouse,Rat.
Application	IHC, WB
Clonality	Polyclonal
Formulation	Rabbit IgG, 1mg/ml in PBS with 0.02% sodium azide, 50% glycerol, pH7.2
Storage Instructions	Store at -20°C for one year. For short term storage and frequent use, store at 4°C for up to one month. Avoid repeated freeze-thaw cycles.
Host	Rabbit
Uniprot ID	Q9UIG0

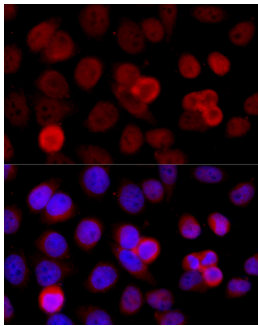
Technical Details

Immunogen	Recombinant fusion protein of human WSTF(NP_115784.1).
Isotype	IgG
Form	Liquid
Concentration	1 mg/ml
Purification	The antibody was affinity-purified from rabbit antiserum by affinity-chromatography using epitope-specific immunogen and the purity is > 95% (by SDS-PAGE).
Suggested Dilutions	WB: 1:500-1:2000 IHC: 1:50-1:200

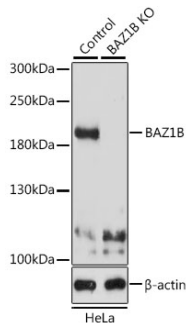
Anti-Tyrosine-protein kinase BAZ1B BAZ1B Antibody (A04438) Images



Western blot analysis of extracts of various cell lines, using WSTF antibody at 1:1000 dilution. Secondary antibody: HRP Goat Anti-Rabbit IgG at 1:10000 dilution. Lysates/proteins: 25ug per lane. Blocking buffer: 3% nonfat dry milk in TBST. Detection: ECL Basic Kit. Exposure time: 5s.



Immunohistochemistry of paraffin-embedded mouse brain using WSTF antibody at dilution of 1:100. Perform microwave antigen retrieval with 10 mM PBS buffer pH 7.2 before commencing with IHC staining protocol.



Western blot analysis of extracts from normal and WSTF knockout HeLa cells, using WSTF antibody at 1:500 dilution. Secondary antibody: HRP Goat Anti-Rabbit IgG at 1:10000 dilution. Lysates/proteins: 25ug per lane. Blocking buffer: 3% nonfat dry milk in TBST. Detection: ECL Basic Kit. Exposure time: 1s.

Submit a product review to [Biocompare.com](https://www.biocompare.com)

Submit a review of this product to [Biocompare.com](https://www.biocompare.com) to receive a \$20 Amazon.com giftcard! Your reviews help your fellow scientists make the right decisions. Thank you for your contribution.



Anti-Tyrosine-protein kinase BAZ1B BAZ1B Antibody

For Research Use Only. Not for use in diagnostic procedures.