

Anti-ILF2 Antibody

Catalog Number: A04443-1

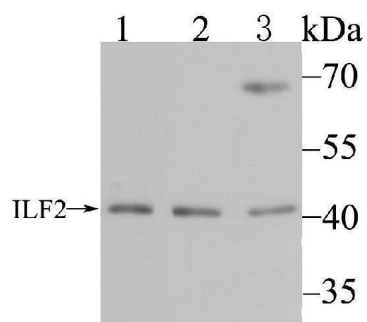
Overview

Product Name	Anti-ILF2 Antibody
Reactive Species	Human, Mouse, Rat
Description	Boster Bio Anti-ILF2 Antibody catalog # A04443-1. Tested in WB,IP,IHC,Flow Cytometry applications. This antibody reacts with Human,Mouse,Rat.
Application	Flow Cytometry, IP, IHC, WB
Clonality	Polyclonal
Formulation	Rabbit IgG, 1mg/ml in PBS with 0.02% sodium azide, 50% glycerol, pH7.2
Storage Instructions	Store at -20°C for one year. For short term storage and frequent use, store at 4°C for up to one month. Avoid repeated freeze-thaw cycles.
Host	Rabbit
Uniprot ID	Q12905

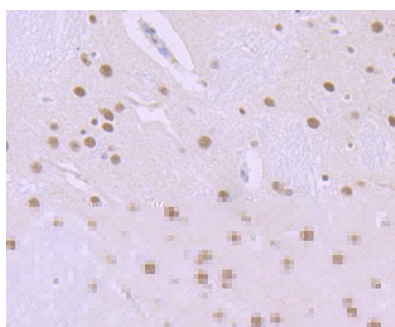
Technical Details

Immunogen	Recombinant protein
Isotype	IgG
Form	Liquid
Concentration	1 mg/ml
Purification	ProA affinity purified
Suggested Dilutions	WB: 1:500 IHC: 1:50-1:200 FC: 1:50-1:100 IP: 1:10-1:20

Anti-ILF2 Antibody (A04443-1) Images



Western blot analysis of ILF2 on different cell lysates using anti-ILF2 antibody at 1/500 dilution. Positive control: Lane 1: Mouse testis tissue Lane 2: HL-60 Lane 3: SH-SY-5Y



Immunohistochemical analysis of paraffin-embedded rat brain tissue using anti-ILF2 antibody. Counter stained with hematoxylin.

Submit a product review to Biocompare.com

Submit a review of this product to Biocompare.com to receive a \$20 Amazon.com giftcard! Your reviews help your fellow scientists make the right decisions. Thank you for your contribution.



Anti-ILF2 Antibody

For Research Use Only. Not for use in diagnostic procedures.