

Anti-CYP2A13 (N338) Antibody

Catalog Number: A04468-1

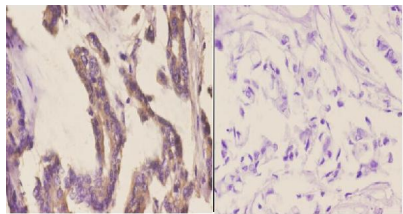
Overview

Product Name	Anti-CYP2A13 (N338) Antibody
Reactive Species	Human
Description	Boster Bio Anti-CYP2A13 (N338) Antibody catalog # A04468-1. Tested in IHC,IF applications. This antibody reacts with Human.
Application	IF, IHC
Clonality	Polyclonal
Formulation	Rabbit IgG, 1mg/ml in PBS with 0.02% sodium azide, 50% glycerol, pH7.2
Storage Instructions	Store at -20°C for one year. For short term storage and frequent use, store at 4°C for up to one month. Avoid repeated freeze-thaw cycles.
Host	Rabbit
Uniprot ID	Q16696

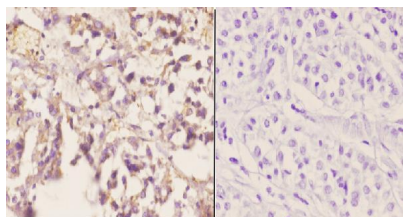
Technical Details

Immunogen	Synthetic peptide, corresponding to amino acids 306-360 of Human CYP2A13.
Isotype	IgG
Form	Liquid
Concentration	1 mg/ml
Purification	The antibody was affinity-purified from rabbit antiserum by affinity-chromatography using epitope-specific immunogen and the purity is > 95% (by SDS-PAGE).
Suggested Dilutions	IHC: 1:50-1:200 IF: 1:50-1:200

Anti-CYP2A13 (N338) Antibody (A04468-1) Images



Immunohistochemistry (IHC) analyzes of CYP2A13 (N338) pAb in paraffin-embedded human breast carcinoma tissue at 1:50. showing cytoplasmic staining. Negative control (the right) Using PBS instead of primary antibody, secondary antibody is Goat Anti-Rabbit IgG-biotin followed by avidin-peroxidase.



Immunohistochemistry (IHC) analyzes of CYP2A13 (N338) pAb in paraffin-embedded human liver carcinoma tissue at 1:50. showing cytoplasmic staining. Negative control (the right) Using PBS instead of primary antibody, secondary antibody is Goat Anti-Rabbit IgG-biotin followed by avidin-peroxidase.

Submit a product review to [Biocompare.com](https://www.biocompare.com)

Submit a review of this product to [Biocompare.com](https://www.biocompare.com) to receive a \$20 Amazon.com giftcard! Your reviews help your fellow scientists make the right decisions. Thank you for your contribution.



Anti-CYP2A13 (N338) Antibody

For Research Use Only. Not for use in diagnostic procedures.