

Anti-KIF4A Antibody

Catalog Number: A04486

Overview

Product Name	Anti-KIF4A Antibody
Reactive Species	Human
Description	Boster Bio Anti-KIF4A Antibody catalog # A04486. Tested in ELISA, WB applications. This antibody reacts with Human.
Application	ELISA, WB
Clonality	Polyclonal
Formulation	Liquid in PBS containing 50% glycerol, 0.5% BSA and 0.02% sodium azide.
Storage Instructions	Store at -20°C for one year. For short term storage and frequent use, store at 4°C for up to one month. Avoid repeated freeze-thaw cycles.
Host	Rabbit
Uniprot ID	O95239

Technical Details

Immunogen	Synthesized peptide derived from human KIF4A
Isotype	IgG
Form	Liquid
Concentration	1 mg/ml
Purification	The antibody was affinity-purified from rabbit antiserum by affinity-chromatography using epitope-specific immunogen.
Suggested Dilutions	<p>Dilute the sample so that the expected range of concentrations fall within the detection range of this kit.</p> <p>If the expected range of concentration is unknown, a pilot test should be conducted to decide the optimal dilution ratio for your samples.</p> <p>Some PubMed article(s) citing the expression level of this target are as follows: Boster Bio's internal QC testing used WB 1:500-1:2000 ELISA 1:40000</p> <p>For protocols, please visit https://www.bosterbio.com/protocol-and-troubleshooting/</p>

Anti-KIF4A Antibody (A04486) Images

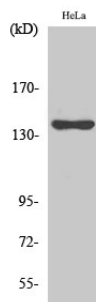


Figure 1. Western blotting validation for Anti-KIF4A Antibody A04486

Western Blot (WB) analysis of specific cells using KIF4A polyclonal antibody. Electrophoresis was performed on a SDS-PAGE gel. To determine SDS-PAGE gel concentration

Submit a product review to Biocompare.com

Submit a review of this product to Biocompare.com to receive a \$20 Amazon.com giftcard! Your reviews help your fellow scientists make the right decisions. Thank you for your contribution.



Anti-KIF4A Antibody