

Anti-Exportin-2 CSE1L Antibody

Catalog Number: A04496-2

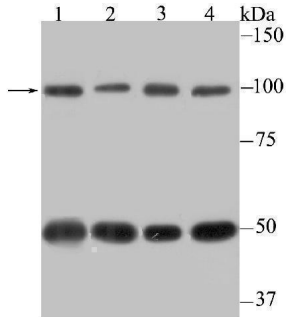
Overview

Product Name	Anti-Exportin-2 CSE1L Antibody
Reactive Species	Human, Mouse, Rat
Description	Boster Bio Anti-Exportin-2 CSE1L Antibody catalog # A04496-2. Tested in WB,ICC,IF,IHC,Flow Cytometry applications. This antibody reacts with Human,Mouse,Rat.
Application	Flow Cytometry, IF, IHC, ICC, WB
Clonality	Polyclonal
Formulation	Rabbit IgG, 1mg/ml in PBS with 0.02% sodium azide, 50% glycerol, pH7.2
Storage Instructions	Store at -20°C for one year. For short term storage and frequent use, store at 4°C for up to one month. Avoid repeated freeze-thaw cycles.
Host	Rabbit
Uniprot ID	P55060

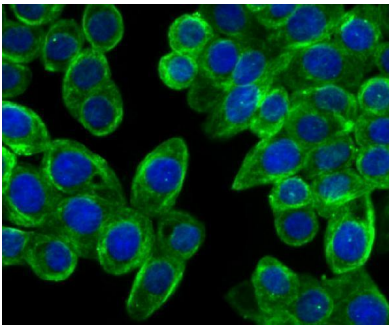
Technical Details

Immunogen	Recombinant protein
Isotype	IgG
Form	Liquid
Concentration	1 mg/ml
Purification	ProA affinity purified
Suggested Dilutions	WB: 1:500-1:1,000 ICC: 1:50-1:200 IHC: 1:50-1:200 FC: 1:50-1:100

Anti-Exportin-2 CSE1L Antibody (A04496-2) Images



Western blot analysis of Cellular Apoptosis Susceptibility on different lysates using anti-Cellular Apoptosis Susceptibility antibody at 1/500 dilution. Positive control: Lane 1: Mouse testis Lane 2: SiHa Lane 3: SK-BR-3 Lane 4: PC-3M



ICC staining Cellular Apoptosis Susceptibility in LOVO cells (green). The nuclear counter stain is DAPI (blue). Cells were fixed in paraformaldehyde, permeabilised with 0.25% Triton X100/PBS.

Submit a product review to Biocompare.com

Submit a review of this product to Biocompare.com to receive a \$20 Amazon.com giftcard! Your reviews help your fellow scientists make the right decisions. Thank you for your contribution.



Anti-Exportin-2 CSE1L Antibody

For Research Use Only. Not for use in diagnostic procedures.