

Anti-Lunatic Fringe LFNG Antibody

Catalog Number: A04513-1

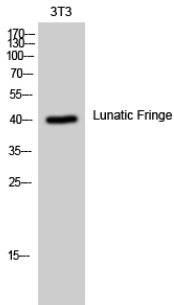
Overview

Product Name	Anti-Lunatic Fringe LFNG Antibody
Reactive Species	Human, Mouse, Rat
Description	Boster Bio Anti-Lunatic Fringe LFNG Antibody catalog # A04513-1. Tested in WB, ELISA applications. This antibody reacts with Human, Mouse, Rat.
Application	ELISA, WB
Clonality	Polyclonal
Formulation	Liquid in PBS containing 50% glycerol, 0.5% stabilizing protein and 0.02% sodium azide. *This antibody is supplied in a stabilized formulation. Compatibility with conjugation reactions depends on the chemistry of the conjugation method used. For conjugation methods that are not compatible with the stabilizing components present in this formulation, a carrier-free antibody format is required.
Storage Instructions	Store at -20°C for one year. For short term storage and frequent use, store at 4°C for up to one month. Avoid repeated freeze-thaw cycles.
Host	Rabbit
Uniprot ID	Q8NES3

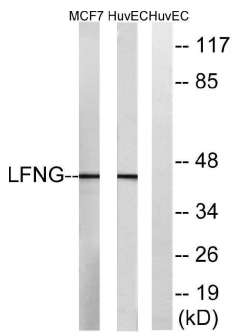
Technical Details

Immunogen	The antiserum was produced against synthesized peptide derived from human LFNG. AA range:121-170
Isotype	IgG
Form	Liquid
Concentration	1 mg/ml
Purification	Immunogen affinity purified
Suggested Dilutions	WB 1:500-1:2000 ELISA 1:10000

Anti-Lunatic Fringe LFNG Antibody (A04513-1) Images



Western Blot analysis of 3T3 cells using Lunatic Fringe Polyclonal Antibody diluted at 1:1000



Western blot analysis of lysates from HUVEC and MCF-7 cells, using LFNG Antibody. The lane on the right is blocked with the synthesized peptide.

Submit a product review to [Biocompare.com](https://www.biocompare.com)

Submit a review of this product to [Biocompare.com](https://www.biocompare.com) to receive a \$20 Amazon.com giftcard! Your reviews help your fellow scientists make the right decisions. Thank you for your contribution.



Anti-Lunatic Fringe LFNG Antibody

For Research Use Only. Not for use in diagnostic procedures.