

Anti-SIK2 Antibody

Catalog Number: A04515

About SIK2

Salt-inducible kinase 2 (SIK2), like its closely related homolog SIK1, belongs AMPK subfamily of the Ser/Thr protein kinase family and negatively regulates CRE-binding protein (CREB) activity by phosphorylating the CREB-specific coactivator transducer of regulated CREB activity (TORC). SIK2 is thought to be part of a signaling cascade that regulates the expression and activity of the insulin-induced genes PGC-1 alpha and UCP-1 in brown adipocytes, impairment of which has been implicated in obesity and insulin resistance in human and animal models. SIK2 has also been reported as a key regulator for neuronal survival after ischemia, suppressing CREB-mediated gene expression after oxygen-glucose deprivation.

Overview

Product Name	Anti-SIK2 Antibody
Reactive Species	Human, Mouse, Rat
Description	Boster Bio Anti-SIK2 Antibody (Catalog # A04515). Tested in ELISA, WB, ICC, IF applications. This antibody reacts with Human, Mouse, Rat.
Application	ELISA, IF, ICC, WB
Clonality	Polyclonal
Formulation	SIK2 Antibody is supplied in PBS containing 0.02% sodium azide.
Storage Instructions	SIK2 antibody can be stored at 4°C for three months and -20°C, stable for up to one year. Avoid repeated freeze-thaw cycles. Antibodies should not be exposed to prolonged high temperatures.
Host	Rabbit
Uniprot ID	Q9H0K1

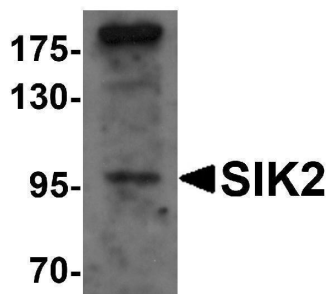
Technical Details

Immunogen	SIK2 antibody was raised against a 16 amino acid synthetic peptide near the center of human SIK2. The immunogen is located within amino acids 270 - 320 of SIK2.
Predicted Reactive Species	Bovine, Guinea Pig, Rabbit
Cross Reactivity	SIK2 antibody is predicted to not cross-react with other SIK protein family members.
Isotype	IgG
Form	Liquid
Concentration	1 mg/mL
Purification	SIK2 Antibody is affinity chromatography purified via peptide column.

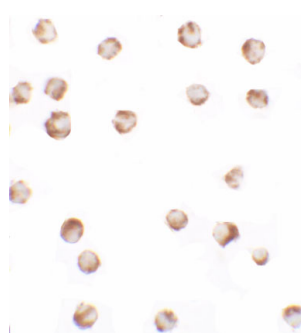
Suggested Dilutions

SIK2 antibody can be used for detection of SIK2 by Western blot at 1 ug/mL.
Antibody validated: Western Blot in human samples; Immunocytochemistry in human samples and Immunofluorescence in human samples. All other applications and species not yet tested. Optimal dilutions for each application should be determined by the researcher.

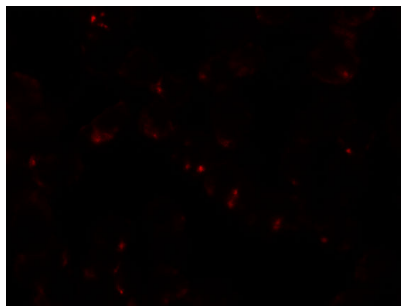
Anti-SIK2 Antibody (A04515) Images



Western blot analysis of SIK2 in SW480 cell lysate with SIK2 antibody at 1 ug/mL.



Immunocytochemistry of SIK2 in SW480 cells with SIK2 antibody at 2.5 ug/ml.



Immunofluorescence of SIK2 in SW480 cells with SIK2 antibody at 5 ug/ml.

Submit a product review to Biocompare.com

Submit a review of this product to Biocompare.com to receive a \$20 Amazon.com giftcard! Your reviews help your fellow scientists make the right decisions. Thank you for your contribution.



Anti-SIK2 Antibody

For Research Use Only. Not for use in diagnostic procedures.