

Anti-PIBF1 Antibody

Catalog Number: A04518

About PIBF1

PIBF1 is synthesized during pregnancy in response to progesterone by T lymphocytes. PIBF1 inhibits arachidonic acid release, controls NK activity, and modifies the cytokine balance exerting an anti-abortive effect. It contains a leucine zipper motif, a basic zipper sequence, a PEST sequence, a nuclear localization signal, an ER membrane retention signal and N-glycosylation and phosphorylation sites. PIBF1 is significantly higher in healthy pregnant women than in women at risk for premature pregnancy termination. Full-length PIBF1 is associated with the nucleus and functions as a transcription factor, whereas secretion of shorter forms which may act as cytokines is induced by activation of the cell.

Overview

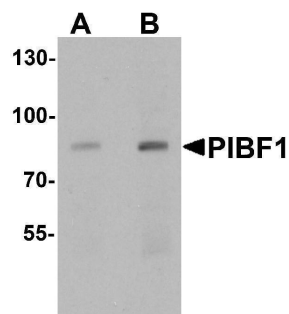
Product Name	Anti-PIBF1 Antibody
Reactive Species	Human, Mouse, Rat
Description	Boster Bio Anti-PIBF1 Antibody (Catalog # A04518). Tested in ELISA, WB, IHC-P, IF applications. This antibody reacts with Human, Mouse, Rat.
Application	ELISA, IF, IHC-P, WB
Clonality	Polyclonal
Formulation	PIBF1 Antibody is supplied in PBS containing 0.02% sodium azide.
Storage Instructions	PIBF1 antibody can be stored at 4°C for three months and -20°C, stable for up to one year.
Host	Rabbit
Uniprot ID	Q8WXW3

Technical Details

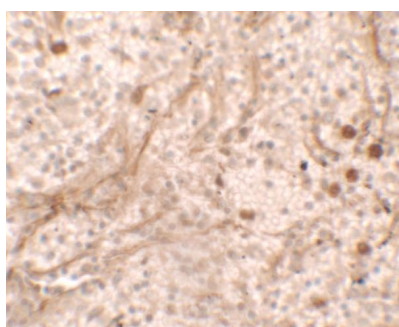
Immunogen	Rabbit polyclonal PIBF1 antibody was raised against a 15 amino acid peptide near the carboxy terminus of human PIBF1. The immunogen is located within amino acids 610 - 660 of PIBF1.
Predicted Reactive Species	Bovine, Guinea Pig, Rabbit
Cross Reactivity	Multiple isoforms of PIBF1 exists as a result of alternative splicing event.
Isotype	IgG
Form	Liquid
Concentration	1 mg/mL
Purification	PIBF1 Antibody is affinity chromatography purified via peptide column.
Suggested Dilutions	PIBF1 antibody can be used for detection of PIBF1 by Western blot at 1 - 2 ug/mL.

Antibody validated: Western Blot in human samples; Immunohistochemistry in human samples and Immunofluorescence in human samples. All other applications and species not yet tested. Optimal dilutions for each application should be determined by the researcher.

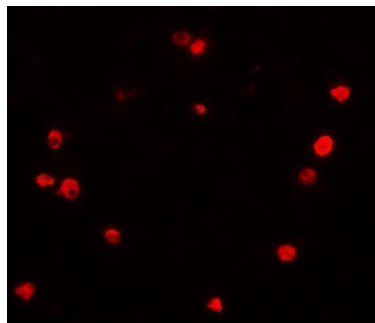
Anti-PIBF1 Antibody (A04518) Images



Western blot analysis of PIBF1 in human placenta tissue lysate with PIBF1 antibody at (A) 1 and (B) 2 ug/mL



Immunohistochemistry of PBIF in human spleen tissue with PBIF antibody at 5 ug/ml.



Immunofluorescence of PBIF in human spleen tissue with PBIF antibody at 20 ug/ml.

Submit a product review to [Biocompare.com](https://www.biocompare.com)

Submit a review of this product to [Biocompare.com](https://www.biocompare.com) to receive a \$20 Amazon.com giftcard! Your reviews help your fellow scientists make the right decisions. Thank you for your contribution.



Anti-PIBF1 Antibody

For Research Use Only. Not for use in diagnostic procedures.