

Anti-LXR-B NR1H2 Antibody

Catalog Number: A04523

About NR1H2

LXR-B belongs to the Liver X Receptor family that encodes highly homologous transcription factors. Like the highly homologous LXR-A, LXR-B forms heterodimers with the retinoic acid receptor RXRalpha, which function as sensors for cellular oxysterols which when activated, increase the expression of genes that control sterol and fatty acid metabolism and homeostasis. Recent experiments have indicated that the LXRs can also modulate both innate and adaptive immune responses. Other studies suggest that genetic variability at the LXR-B gene locus may be a risk factor for Alzheimer's disease. One hypothesis postulates that LXR may be upstream of ApoE and potentiates the risk associated effects of the epsilon3 allele.

Overview

Product Name	Anti-LXR-B NR1H2 Antibody
Reactive Species	Human, Mouse, Rat
Description	Boster Bio Anti-LXR-B NR1H2 Antibody (Catalog # A04523). Tested in ELISA, WB applications. This antibody reacts with Human, Mouse, Rat.
Application	ELISA, WB
Clonality	Polyclonal
Formulation	LXR-B Antibody is supplied in PBS containing 0.02% sodium azide.
Storage Instructions	LXR-B antibody can be stored at 4°C for three months and -20°C, stable for up to one year. Avoid repeated freeze-thaw cycles. Antibodies should not be exposed to prolonged high temperatures.
Host	Rabbit
Uniprot ID	P55055

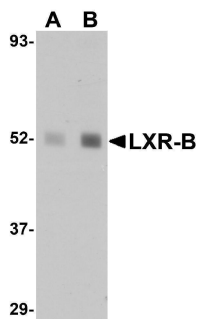
Technical Details

Immunogen	LXR-B antibody was raised against a 14 amino acid synthetic peptide from near the amino terminus human LXR-B. The immunogen is located within the first 50 amino acids of LXR-B.
Predicted Reactive Species	Bovine, Guinea Pig, Rabbit
Isotype	IgG
Form	Liquid
Concentration	1 mg/mL
Purification	LXR-B Antibody is affinity chromatography purified via peptide column.

Suggested Dilutions

LXR-B antibody can be used for detection of LXR-B by Western blot at 1 - 2 ug/mL.
Antibody validated: Western Blot in human samples. All other applications and species not yet tested. Optimal dilutions for each application should be determined by the researcher.

Anti-LXR-B NR1H2 Antibody (A04523) Images



Western blot analysis of LXR-B in human lung tissue lysate with LXR-B antibody at (A) 1 and (B) 2 ug/mL.

Submit a product review to Biocompare.com

Submit a review of this product to Biocompare.com to receive a \$20 Amazon.com giftcard! Your reviews help your fellow scientists make the right decisions. Thank you for your contribution.



Anti-LXR-B NR1H2 Antibody

For Research Use Only. Not for use in diagnostic procedures.