

Anti-SIP1 GEMIN2 Antibody

Catalog Number: A04530

About GEMIN2

SIP1 is one of the proteins found in the SMN complex, which consists of the survival of motor neuron (SMN) protein and several gemin proteins. The SMN complex is localized to a subnuclear compartment called gems (gemini of coiled bodies) and is required for assembly of spliceosomal snRNPs and for pre-mRNA splicing. SIP1 interacts directly with the SMN and it is required for formation of the SMN complex. A knockout mouse targeting the mouse homolog of this gene exhibited disrupted snRNP assembly and motor neuron degeneration. However, knockdown of the SIP1 mRNA in motor neurons showed normal motor axons while that of SMN mRNA did show abnormal motor axon outgrowth, indicating that SIP1 may have additional roles outside of the SMN complex.

Overview

Product Name	Anti-SIP1 GEMIN2 Antibody
Reactive Species	Human, Mouse, Rat
Description	Boster Bio Anti-SIP1 GEMIN2 Antibody (Catalog # A04530). Tested in ELISA, WB, ICC, IF applications. This antibody reacts with Human, Mouse, Rat.
Application	ELISA, IF, ICC, WB
Clonality	Polyclonal
Formulation	SIP1 Antibody is supplied in PBS containing 0.02% sodium azide.
Storage Instructions	SIP1 antibody can be stored at 4°C for three months and -20°C, stable for up to one year. Avoid repeated freeze-thaw cycles. Antibodies should not be exposed to prolonged high temperatures.
Host	Rabbit
Uniprot ID	O14893

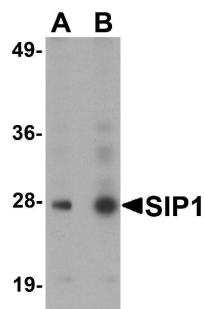
Technical Details

Immunogen	SIP1 antibody was raised against a 19 amino acid synthetic peptide near the carboxy terminus of human SIP1. The immunogen is located within the last 50 amino acids of SIP1.
Predicted Reactive Species	Bovine, Guinea Pig, Rabbit
Isotype	IgG
Form	Liquid
Concentration	1 mg/mL
Purification	SIP1 Antibody is affinity chromatography purified via peptide column.

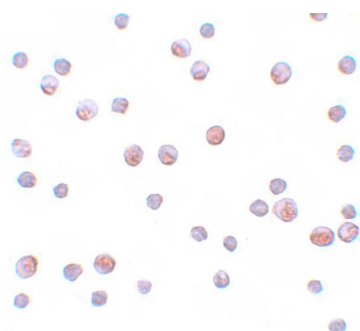
Suggested Dilutions

SIP1 antibody can be used for detection of SIP1 by Western blot at 0.5 - 1 ug/mL. Antibody can also be used for immunocytochemistry starting at 4 ug/mL. For immunofluorescence start at 20 ug/mL. Antibody validated: Western Blot in human samples; Immunocytochemistry in human samples and Immunofluorescence in human samples. All other applications and species not yet tested. Optimal dilutions for each application should be determined by the researcher.

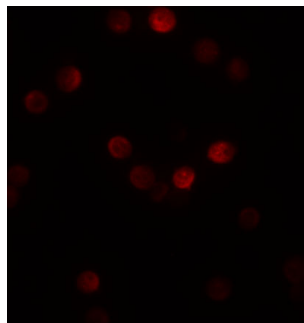
Anti-SIP1 GEMIN2 Antibody (A04530) Images



Western blot analysis of SIP1 in HeLa cell lysate with SIP1 antibody at (A) 0.5 and (B) 1ug/mL.



Immunocytochemistry of SIP1 in HeLa cells with SIP1 antibody at 4 ug/mL.



Immunofluorescence of SIP1 in HeLa cells with SIP1 antibody at 20 ug/mL.

Submit a product review to [Biocompare.com](https://www.biocompare.com)

Submit a review of this product to [Biocompare.com](https://www.biocompare.com) to receive a \$20 Amazon.com giftcard! Your reviews help your fellow scientists make the right decisions. Thank you for your contribution.



Anti-SIP1 GEMIN2 Antibody

For Research Use Only. Not for use in diagnostic procedures.