

## Anti-Cyclin E2 CCNE2 Antibody

Catalog Number: A04536-2

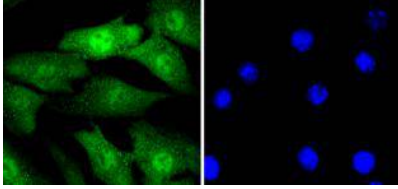
### Overview

Product Name	Anti-Cyclin E2 CCNE2 Antibody
Reactive Species	Human, Mouse
Description	Boster Bio Anti-Cyclin E2 CCNE2 Antibody catalog # A04536-2. Tested in WB,ICC/IF,IHC,Flow Cytometry applications. This antibody reacts with Human,Mouse.
Application	Flow Cytometry, IF, IHC, ICC, WB
Clonality	Polyclonal
Formulation	Rabbit IgG, 1mg/ml in PBS with 0.02% sodium azide, 50% glycerol, pH7.2
Storage Instructions	Store at -20°C for one year. For short term storage and frequent use, store at 4°C for up to one month. Avoid repeated freeze-thaw cycles.
Host	Rabbit
Uniprot ID	O96020

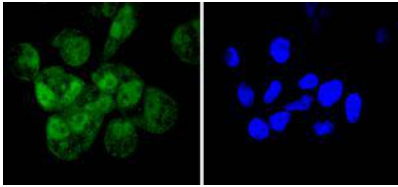
### Technical Details

Immunogen	recombinant protein
Isotype	IgG
Form	Liquid
Concentration	1 mg/ml
Purification	ProA affinity purified
Suggested Dilutions	WB: 1:1,000-1:2,000 ICC: 1:50-1:200 IHC: 1:50-1:200 FC: 1:50-1:100

## Anti-Cyclin E2 CCNE2 Antibody (A04536-2) Images



ICC staining Cyclin E2 in NIH/3T3 cells (green). The nuclear counter stain is DAPI (blue). Cells were fixed in paraformaldehyde, permeabilised with 0.25% Triton X100/PBS.



ICC staining Cyclin E2 in HeLa cells (green). The nuclear counter stain is DAPI (blue). Cells were fixed in paraformaldehyde, permeabilised with 0.25% Triton X100/PBS.

## 1 Publications Citing This Product

1. PubMed ID: 31974617, Wang S,Zhang C,Zhang X.Downregulation of long non-coding RNA ANRIL promotes proliferation and migration in hypoxic human pulmonary artery smooth muscle cells.Mol Med Rep.2020 Feb;21(2):589-596.doi:10.3892/mmr.2019.10887.Epub 2019 Dec 17.PMID:31974617; PMC

Visit [bosterbio.com/anti-cyclin-e2-ccne2-antibody-a04536-2-boster.html](https://bosterbio.com/anti-cyclin-e2-ccne2-antibody-a04536-2-boster.html) to see all 1 publications.

## Submit a product review to Biocompare.com

Submit a review of this product to Biocompare.com to receive a \$20 Amazon.com giftcard! Your reviews help your fellow scientists make the right decisions. Thank you for your contribution.



Anti-Cyclin E2 CCNE2 Antibody

For Research Use Only. Not for use in diagnostic procedures.