

Anti-ZIMP10 ZMIZ1 Antibody

Catalog Number: A04537

About ZMIZ1

ZIMP10, also known as ZMIZ1, is a novel PIAS (protein inhibitor of activated signal transducer and activator of transcription)-like protein initially identified as a transcriptional co-activator of the androgen receptor (AR). ZIMP10 and the related protein ZIMP7 interact with PIAS3 and enhances AR-mediated transcription. Later experiments showed that ZIMP10 is also a co-activator of the p53 tumor suppressor. Mice deficient in ZIMP10 result in embryonic lethality by E10.5; these embryos reveal severe defects in the reorganization of the yolk sac vascular plexus, indicating that ZIMP10 plays an important role in proper vascular development.

Overview

Product Name	Anti-ZIMP10 ZMIZ1 Antibody
Reactive Species	Human
Description	Boster Bio Anti-ZIMP10 ZMIZ1 Antibody (Catalog # A04537). Tested in ELISA, WB, ICC, IF applications. This antibody reacts with Human.
Application	ELISA, IF, ICC, WB
Clonality	Polyclonal
Formulation	ZIMP10 Antibody is supplied in PBS containing 0.02% sodium azide.
Storage Instructions	ZIMP10 antibody can be stored at 4°C for three months and -20°C, stable for up to one year. Avoid repeated freeze-thaw cycles. Antibodies should not be exposed to prolonged high temperatures.
Host	Rabbit
Uniprot ID	Q9ULJ6

Technical Details

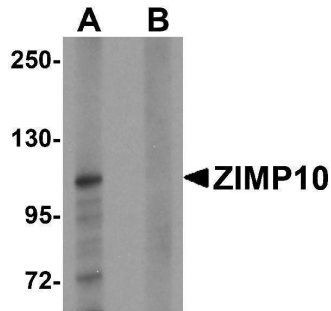
Immunogen	ZIMP10 antibody was raised against a 15 amino acid synthetic peptide near the amino terminus of human ZIMP10. The immunogen is located within amino acids 90 - 140 of ZIMP10.
Predicted Reactive Species	Mouse
Cross Reactivity	At least three isoforms are known to exist; this antibody will recognize all three. ZIMP10 antibody is predicted to not cross-react with other PIAS protein family members.
Isotype	IgG
Form	Liquid
Concentration	1 mg/mL
Purification	ZIMP10 Antibody is affinity chromatography purified via peptide column.

Suggested Dilutions

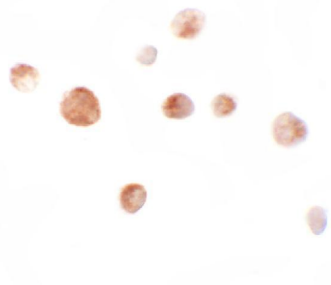
ZIMP10 antibody can be used for detection of ZIMP10 by Western blot at 0.5 ug/mL. Antibody can also be used for immunocytochemistry starting at 10 ug/mL. For immunofluorescence start at 20 ug/mL.

Antibody validated: Western Blot in human samples; Immunocytochemistry in human samples and Immunofluorescence in human samples. All other applications and species not yet tested. Optimal dilutions for each application should be determined by the researcher.

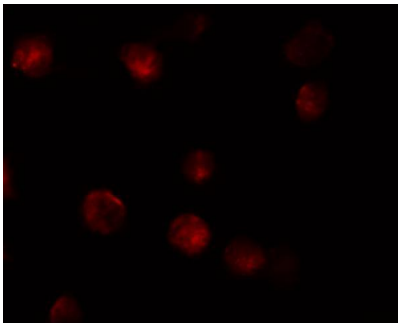
Anti-ZIMP10 ZMIZ1 Antibody (A04537) Images



Western blot analysis of ZIMP10 in K562 cell lysate with ZIMP10 antibody at 0.5 ug/mL in (A) the absence and (B) the presence of blocking peptide



Immunocytochemistry of ZIMP10 in K562 cells with ZIMP10 antibody at 10 ug/mL.



Immunofluorescence of ZIMP10 in K562 cells with ZIMP10 antibody at 20 ug/mL.

Submit a product review to [Biocompare.com](https://www.biocompare.com)

Submit a review of this product to [Biocompare.com](https://www.biocompare.com) to receive a \$20 Amazon.com giftcard! Your reviews help your fellow scientists make the right decisions. Thank you for your contribution.



Anti-ZIMP10 ZMIZ1 Antibody

For Research Use Only. Not for use in diagnostic procedures.