

Anti-Prolactin-inducible protein PIP Antibody

Catalog Number: A04543

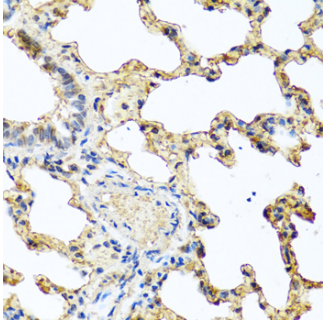
Overview

Product Name	Anti-Prolactin-inducible protein PIP Antibody
Reactive Species	Human, Mouse, Rat
Description	Boster Bio Anti-Prolactin-inducible protein PIP Antibody catalog # A04543. Tested in IHC, ICC/IF applications. This antibody reacts with Human, Mouse, Rat.
Application	IF, IHC, ICC
Clonality	Polyclonal
Formulation	Rabbit IgG, 1mg/ml in PBS with 0.02% sodium azide, 50% glycerol, pH7.2
Storage Instructions	Store at -20°C for one year. For short term storage and frequent use, store at 4°C for up to one month. Avoid repeated freeze-thaw cycles.
Host	Rabbit
Uniprot ID	P12273

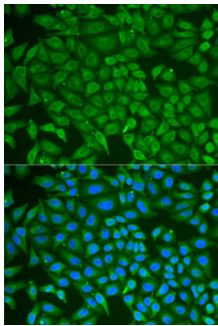
Technical Details

Immunogen	Recombinant fusion protein of human PIP(NP_002643.1).
Isotype	IgG
Form	Liquid
Concentration	1 mg/ml
Purification	The antibody was affinity-purified from rabbit antiserum by affinity-chromatography using epitope-specific immunogen and the purity is > 95% (by SDS-PAGE).
Suggested Dilutions	IHC: 1:50-1:100 ICC/IF: 1:50-1:100

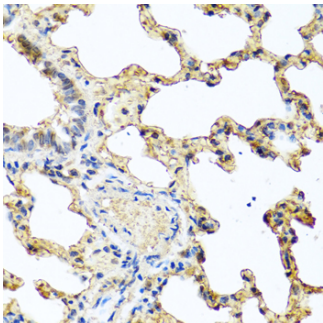
Anti-Prolactin-inducible protein PIP Antibody (A04543) Images



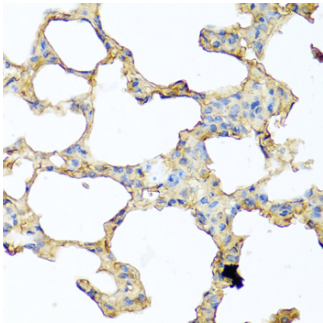
Immunohistochemistry of paraffin-embedded rat lung using PIP antibody at dilution of 1:100 .Perform microwave antigen retrieval with 10 mM PBS buffer pH 7.2 before commencing with IHC staining protocol.



Immunofluorescence analysis of U2OS cells using PIP antibody . Blue: DAPI for nuclear staining.



Immunohistochemistry of paraffin-embedded human prostate using PIP antibody at dilution of 1:100 .Perform microwave antigen retrieval with 10 mM PBS buffer pH 7.2 before commencing with IHC staining protocol.



Immunohistochemistry of paraffin-embedded mouse lung using PIP antibody at dilution of 1:100 .Perform microwave antigen retrieval with 10 mM PBS buffer pH 7.2 before commencing with IHC staining protocol.

Submit a product review to Biocompare.com

Submit a review of this product to Biocompare.com to receive a \$20 Amazon.com giftcard! Your reviews help your fellow scientists make the right decisions. Thank you for your contribution.



Anti-Prolactin-inducible protein PIP Antibody

For Research Use Only. Not for use in diagnostic procedures.