

Anti-Lymphotactin/Xcl1 Antibody Picoband™

Catalog Number: A04548

About Xcl1

Chemokine (C motif) ligand (XCL1) is a small cytokine belonging to the XC chemokine family that is also known as lymphotactin. Muller et al. (1995) mapped the gene to chromosome 1q23 by FISH. The sequence of the deduced 114-amino acid protein is most homologous to the CC chemokines CCL8 and CCL3. It is found in high levels in spleen, thymus, intestine and peripheral blood leukocytes, and at lower levels in lung, prostate gland and ovary. XCL1 induces the migration of cells expressing XCR1.

Overview

| | |
|----------------------|---|
| Product Name | Anti-Lymphotactin/Xcl1 Antibody Picoband™ |
| Reactive Species | Mouse, Rat |
| Description | Boster Bio Anti-Lymphotactin/Xcl1 Antibody Picoband™ catalog # A04548. Tested in ELISA, WB applications. This antibody reacts with Mouse, Rat. |
| Application | ELISA, WB |
| Clonality | Polyclonal |
| Formulation | Each vial contains 4mg Trehalose, 0.9mg NaCl, 0.2mg Na ₂ HPO ₄ , 0.05mg NaN ₃ . |
| Storage Instructions | Store at -20°C for one year from date of receipt. After reconstitution, at 4°C for one month. It can also be aliquotted and stored frozen at -20°C for six months. Avoid repeated freeze-thaw cycles. |
| Host | Rabbit |
| Uniprot ID | P47993 |

Technical Details

| | |
|-------------------------------|--|
| Immunogen | E. coli-derived mouse Lymphotactin recombinant protein (Position: V22-G114). |
| Recommended Detection Systems | Boster recommends Enhanced Chemiluminescent Kit with anti-Rabbit IgG (EK1002) for Western blot. |
| Cross Reactivity | No cross-reactivity with other proteins. |
| Isotype | Rabbit IgG |
| Form | Lyophilized |
| Concentration | Adding 0.2 ml of distilled water will yield a concentration of 500 ug/ml. |
| Purification | Immunogen affinity purified. |
| Suggested Dilutions | Dilute the sample so that the expected range of concentrations fall within the detection range of this |

kit.

If the expected range of concentration is unknown, a pilot test should be conducted to decide the optimal dilution ratio for your samples.

Some PubMed article(s) citing the expression level of this target are as follows:

Boster Bio's internal QC testing used:

Western blot, 0.1-0.5ug/ml

Direct ELISA, 0.1-0.5ug/ml

Anti-Lymphotactin/Xcl1 Antibody Picoband™ (A04548) Images

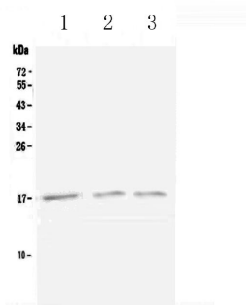


Figure 1. Western blot analysis of Lymphotactin using anti-Lymphotactin antibody (A04548). Electrophoresis was performed on a 5-20% SDS-PAGE gel at 70V (Stacking gel) / 90V (Resolving gel) for 2-3 hours. The sample well of each lane was loaded with 50ug of sample under reducing conditions.

Lane 1: mouse spleen tissue lysates,

Lane 2: mouse kidney tissue lysates,

Lane 3: rat kidney tissue lysates.

After Electrophoresis, proteins were transferred to a Nitrocellulose membrane at 150mA for 50-90 minutes. Blocked the membrane with 5% Non-fat Milk/ TBS for 1.5 hour at RT. The membrane was incubated with rabbit anti-Lymphotactin antigen affinity purified polyclonal antibody (Catalog # A04548) at 0.5 ug/mL overnight at 4°C, then washed with TBS-0.1%Tween 3 times with 5 minutes each and probed with a goat anti-rabbit IgG-HRP secondary antibody at a dilution of 1:10000 for 1.5 hour at RT. The signal is developed using an Enhanced Chemiluminescent detection (ECL) kit (Catalog # EK1002) with Tanon 5200 system. A specific band was detected for Lymphotactin at approximately 17KD. The expected band size for Lymphotactin is at 12KD.

Submit a product review to Biocompare.com

Submit a review of this product to Biocompare.com to receive a \$20 Amazon.com giftcard! Your reviews help your fellow scientists make the right decisions. Thank you for your contribution.



Anti-Lymphotactin/Xcl1 Antibody™