

Anti-APC6 CDC16 Antibody

Catalog Number: A04573-1

About CDC16

Cell cycle regulated protein ubiquitination and degradation within subcellular domains is thought to be essential for the normal progression of mitosis. APC6 is a highly conserved component of the anaphase promoting complex/cyclosome (APC/C), a cell cycle-regulated E3 ubiquitin ligase that controls progression through mitosis and the G1 phase of the cell cycle. APC/C is responsible for degrading anaphase inhibitors, mitotic cyclins, and spindle-associated proteins ensuring that events of mitosis take place in proper sequence. The individual APC/C components mRNA and protein levels are expressed at approximately the same levels in most tissues and cell lines, suggesting that they perform their functions as part of a complex. While little is known of APC6, it has been shown to interact with and is stabilized by CDC26 through an intermolecular TPR mimic composed of one helix from each protein.

Overview

Product Name	Anti-APC6 CDC16 Antibody
Reactive Species	Human, Mouse
Description	Boster Bio Anti-APC6 CDC16 Antibody (Catalog # A04573-1). Tested in ELISA, WB, IHC-P, IF applications. This antibody reacts with Human, Mouse.
Application	ELISA, IF, IHC-P, WB
Clonality	Polyclonal
Formulation	APC6 Antibody is supplied in PBS containing 0.02% sodium azide.
Storage Instructions	APC6 antibody can be stored at 4°C for three months and -20°C, stable for up to one year. Avoid repeated freeze-thaw cycles. Antibodies should not be exposed to prolonged high temperatures.
Host	Rabbit
Uniprot ID	Q13042

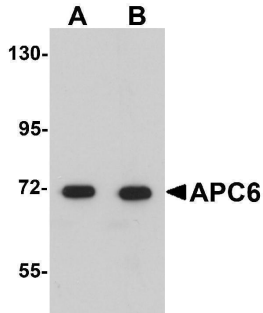
Technical Details

Immunogen	APC6 antibody was raised against an 18 amino acid synthetic peptide near the amino terminus of human APC6. The immunogen is located within the first 50 amino acids of APC6.
Predicted Reactive Species	Rat
Isotype	IgG
Form	Liquid
Concentration	1 mg/mL
Purification	APC6 Antibody is affinity chromatography purified via peptide column.

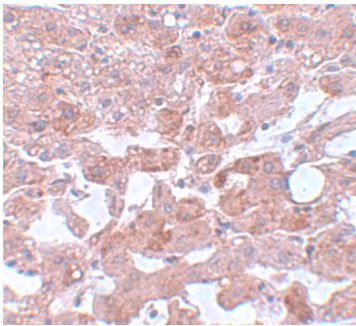
Suggested Dilutions

APC6 antibody can be used for detection of APC6 by Western blot at 1 - 2 ug/mL. Antibody can also be used for immunohistochemistry starting at 5 ug/mL. For immunofluorescence start at 20 ug/mL. Antibody validated: Western Blot in human samples; Immunohistochemistry in human samples and Immunofluorescence in human samples. All other applications and species not yet tested. Optimal dilutions for each application should be determined by the researcher.

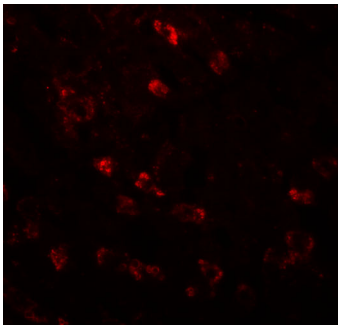
Anti-APC6 CDC16 Antibody (A04573-1) Images



Western blot analysis of APC6 in human liver tissue lysate with APC6 antibody at (A) 1 and (B) 2 ug/mL.



Immunohistochemistry of APC6 in human liver tissue with APC6 antibody at 5 ug/mL.



Immunofluorescence of APC6 in human liver tissue with APC6 antibody at 20 ug/mL.

Submit a product review to [Biocompare.com](https://www.biocompare.com)

Submit a review of this product to [Biocompare.com](https://www.biocompare.com) to receive a \$20 Amazon.com giftcard! Your reviews help your fellow scientists make the right decisions. Thank you for your contribution.



Anti-APC6 CDC16 Antibody

For Research Use Only. Not for use in diagnostic procedures.