

Anti-Cdc16 (phospho-S560) Antibody

Catalog Number: A04573S560

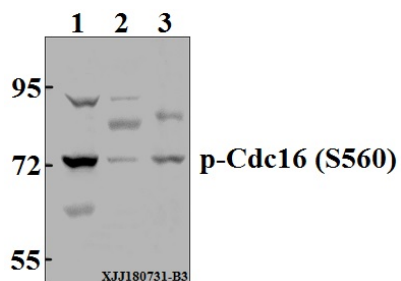
Overview

Product Name	Anti-Cdc16 (phospho-S560) Antibody
Reactive Species	Human, Rat
Description	Boster Bio Anti-Cdc16 (phospho-S560) Antibody catalog # A04573S560. Tested in WB applications. This antibody reacts with Human,Rat.
Application	WB
Clonality	Polyclonal
Formulation	Rabbit IgG, 1mg/ml in PBS with 0.02% sodium azide, 50% glycerol, pH7.2
Storage Instructions	Store at -20°C for one year. For short term storage and frequent use, store at 4°C for up to one month. Avoid repeated freeze-thaw cycles.
Host	Rabbit
Uniprot ID	Q13042

Technical Details

Immunogen	Synthetic peptide derived from human Cdc16 around the phosphorylation site of S560.
Isotype	IgG
Form	Liquid
Concentration	1 mg/ml
Purification	The antibody was affinity-purified from rabbit antiserum by affinity-chromatography using epitope-specific immunogen and the purity is > 95% (by SDS-PAGE).
Suggested Dilutions	WB: 1:500-1:1000

Anti-Cdc16 (phospho-S560) Antibody (A04573S560) Images



Western blot (WB) analysis of p-Cdc16 (S560) pAb at 1:500 dilution Lane1:A375 whole cell lysate(40µg) Lane2:U-87MG whole cell lysate(40µg) Lane3:C6 whole cell lysate(40µg)

Submit a product review to Biocompare.com

Submit a review of this product to Biocompare.com to receive a \$20 Amazon.com giftcard! Your reviews help your fellow scientists make the right decisions. Thank you for your contribution.



Anti-Cdc16 (phospho-S560) Antibody

For Research Use Only. Not for use in diagnostic procedures.