

## Anti-IgG1 Antibody

Catalog Number: A04575

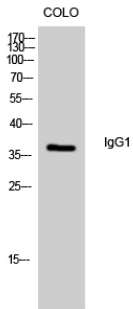
### Overview

|                      |  |
|----------------------|--|
| Product Name         | Anti-IgG1 Antibody   |
| Reactive Species     | Human, Mouse   |
| Description          | Boster Bio Anti-IgG1 Antibody catalog # A04575. Tested in WB, IHC, IF, ELISA applications. This antibody reacts with Human, Mouse.   |
| Application          | ELISA, IF, IHC, WB   |
| Clonality            | Polyclonal   |
| Formulation          | Liquid in PBS containing 50% glycerol, 0.5% stabilizing protein and 0.02% sodium azide.<br>*This antibody is supplied in a stabilized formulation.<br>Compatibility with conjugation reactions depends on the chemistry of the conjugation method used. For conjugation methods that are not compatible with the stabilizing components present in this formulation, a carrier-free antibody format is required. |
| Storage Instructions | Store at -20°C for one year. For short term storage and frequent use, store at 4°C for up to one month. Avoid repeated freeze-thaw cycles.   |
| Host                 | Rabbit   |
| Uniprot ID           | P01857   |

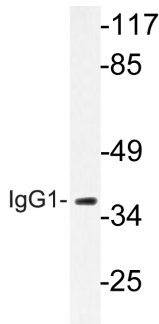
### Technical Details

|                     |  |
|---------------------|--|
| Immunogen           | The antiserum was produced against synthesized peptide derived from human IgG1. AA range:196-245 |
| Isotype             | IgG  |
| Form                | Liquid   |
| Concentration       | 1 mg/ml  |
| Purification        | Immunogen affinity purified  |
| Suggested Dilutions | WB 1:500-1:2000<br>IHC 1:100-1:300<br>ELISA 1:40000<br>IF 1:50-200                               |

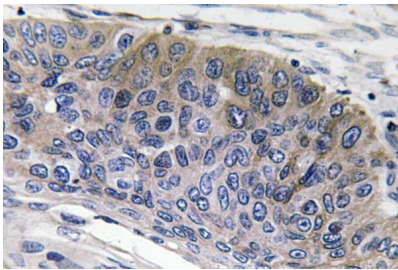
## Anti-IgG1 Antibody (A04575) Images



Western Blot analysis of colo cells using IgG1 Polyclonal Antibody diluted at 1:500



Western blot analysis of lysate from LOVO cells, using IgG1 antibody.



Immunohistochemistry analysis of IgG1 antibody in paraffin-embedded human lung carcinoma tissue.

### Submit a product review to [Biocompare.com](https://www.biocompare.com)

Submit a review of this product to [Biocompare.com](https://www.biocompare.com) to receive a \$20 Amazon.com giftcard! Your reviews help your fellow scientists make the right decisions. Thank you for your contribution.



Anti-IgG1 Antibody

For Research Use Only. Not for use in diagnostic procedures.