

Anti-CLEC9A Antibody

Catalog Number: A04577

About CLEC9A

C-type lectin domain family 9 member A is a protein that in humans is encoded by the CLEC9A gene. CLEC9A is a group V C-type lectin-like receptor (CTLR) that functions as an activation receptor and is expressed on myeloid lineage cells. By genomic sequence analysis, this gene is mapped to chromosome 12p13.31, centromeric to CLEC12B (617573) and telomeric to CLEC1A (606782).

Overview

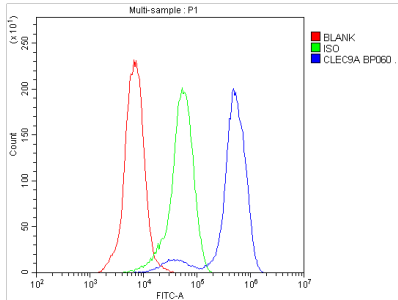
Product Name	Anti-CLEC9A Antibody
Reactive Species	Human
Description	Boster Bio Anti-CLEC9A Antibody catalog # A04577. Tested in Flow Cytometry, IHC, ICC applications. This antibody reacts with Human.
Application	Flow Cytometry, IHC, ICC
Clonality	Polyclonal
Formulation	Each vial contains 4mg Trehalose, 0.9mg NaCl, 0.2mg Na ₂ HPO ₄ , 0.05mg NaN ₃ .
Storage Instructions	Store at -20°C for one year from date of receipt. After reconstitution, at 4°C for one month. It can also be aliquotted and stored frozen at -20°C for six months. Avoid repeated freeze-thaw cycles.
Host	Rabbit
Uniprot ID	Q6UXN8

Technical Details

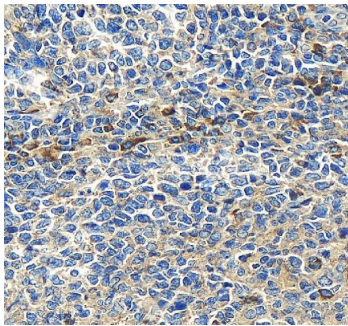
Immunogen	A synthetic peptide corresponding to a sequence in the middle region of human CLEC9A, which shares 47.5% and 55% amino acid (aa) sequence identity with mouse and rat CLEC9A, respectively.
Recommended Detection Systems	Boster recommends HRP Conjugated anti-Rabbit IgG Super Vision Assay Kit (SV0002-1) for IHC(F) and ICC.
Cross Reactivity	No cross-reactivity with other proteins.
Isotype	Rabbit IgG
Form	Lyophilized
Concentration	Adding 0.2 ml of distilled water will yield a concentration of 500 ug/ml.
Suggested Dilutions	Immunohistochemistry (Frozen Section), 0.5-1ug/ml Immunocytochemistry, 0.5-1ug/ml Flow Cytometry (Fixed), 1-3ug/1x10 ⁶ cells



Anti-CLEC9A Antibody (A04577) Images



Flow Cytometry analysis of Jurkat cells using anti-CLEC9A antibody (A04577). Overlay histogram showing Jurkat cells stained with A04577 (Blue line). To facilitate intracellular staining, cells were fixed with 4% paraformaldehyde and permeabilized with permeabilization buffer. The cells were blocked with 10% normal goat serum. And then incubated with rabbit anti-CLEC9A Antibody (A04577, 1ug/1x10⁶ cells) for 30 min at 20°C. DyLight®488 conjugated goat anti-rabbit IgG (BA1127, 5-10ug/1x10⁶ cells) was used as secondary antibody for 30 minutes at 20°C. Isotype control antibody (Green line) was rabbit IgG (1ug/1x10⁶) used under the same conditions. Unlabelled sample (Red line) was also used as a control.



IHC analysis of CLEC9A using anti-CLEC9A antibody (A04577). CLEC9A was detected in a paraffin-embedded section of human tonsil tissue. Heat mediated antigen retrieval was performed in EDTA buffer (pH 8.0, epitope retrieval solution). The tissue section was blocked with 10% goat serum. The tissue section was then incubated with 2 ug/ml rabbit anti-CLEC9A Antibody (A04577) overnight at 4°C. Peroxidase Conjugated Goat Anti-rabbit IgG was used as secondary antibody and incubated for 30 minutes at 37°C. The tissue section was developed using HRP Conjugated Rabbit IgG Super Vision Assay Kit (Catalog # SV0002) with DAB as the chromogen.

Submit a product review to [Biocompare.com](https://www.biocompare.com)

Submit a review of this product to [Biocompare.com](https://www.biocompare.com) to receive a \$20 Amazon.com giftcard! Your reviews help your fellow scientists make the right decisions. Thank you for your contribution.



Anti-CLEC9A Antibody

For Research Use Only. Not for use in diagnostic procedures.