

Anti-mRNA-decapping enzyme 1A Dcp1a Antibody

Catalog Number: A04587

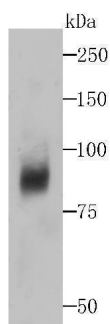
Overview

Product Name	Anti-mRNA-decapping enzyme 1A Dcp1a Antibody
Reactive Species	Human
Description	Boster Bio Anti-mRNA-decapping enzyme 1A Dcp1a Antibody catalog # A04587. Tested in WB,ICC,IHC,Flow Cytometry applications. This antibody reacts with Human.
Application	Flow Cytometry, IHC, ICC, WB
Clonality	Polyclonal
Formulation	Rabbit IgG, 1mg/ml in PBS with 0.02% sodium azide, 50% glycerol, pH7.2
Storage Instructions	Store at -20°C for one year. For short term storage and frequent use, store at 4°C for up to one month. Avoid repeated freeze-thaw cycles.
Host	Rabbit
Uniprot ID	Q9NPI6

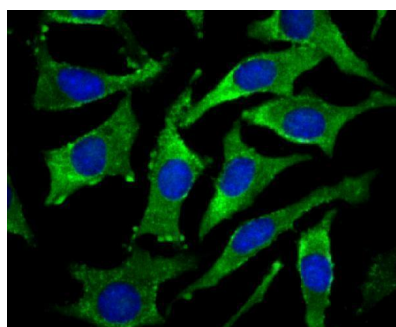
Technical Details

Isotype	IgG
Form	Liquid
Concentration	1 mg/ml
Purification	ProA affinity purified
Suggested Dilutions	WB: 1:500-1:2000 ICC: 1:50-1:200 IHC: 1:50-1:200 FC: 1:50-1:100

Anti-mRNA-decapping enzyme 1A Dcp1a Antibody (A04587) Images



Western blot analysis of Dcp1a on human liver tissue lysates using anti-Dcp1a antibody at 1/500 dilution.



ICC staining Dcp1a in SH-SY-5Y cells (green). The nuclear counter stain is DAPI (blue). Cells were fixed in paraformaldehyde, permeabilised with 0.25% Triton X100/PBS.

Submit a product review to Biocompare.com

Submit a review of this product to Biocompare.com to receive a \$20 Amazon.com giftcard! Your reviews help your fellow scientists make the right decisions. Thank you for your contribution.



Anti-mRNA-decapping enzyme 1A Dcp1a Antibody

For Research Use Only. Not for use in diagnostic procedures.