

Anti-SMIF (S133) DCP1A Antibody

Catalog Number: A04587S133

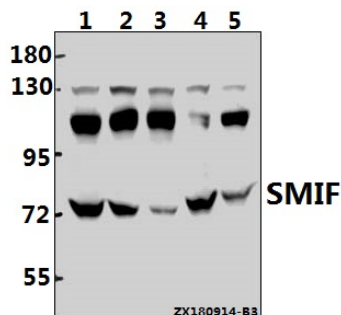
Overview

Product Name	Anti-SMIF (S133) DCP1A Antibody
Reactive Species	Human, Mouse, Rat
Description	Boster Bio Anti-SMIF (S133) DCP1A Antibody catalog # A04587S133. Tested in WB,IHC applications. This antibody reacts with Human,Mouse,Rat.
Application	IHC, WB
Clonality	Polyclonal
Formulation	Rabbit IgG, 1mg/ml in PBS with 0.02% sodium azide, 50% glycerol, pH7.2
Storage Instructions	Store at -20°C for one year. For short term storage and frequent use, store at 4°C for up to one month. Avoid repeated freeze-thaw cycles.
Host	Rabbit
Uniprot ID	Q9NPI6

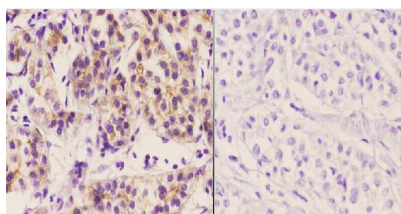
Technical Details

Immunogen	Synthetic peptide, corresponding to amino acids 102-150 of Human SMIF.
Isotype	IgG
Form	Liquid
Concentration	1 mg/ml
Purification	The antibody was affinity-purified from rabbit antiserum by affinity-chromatography using epitope-specific immunogen and the purity is > 95% (by SDS-PAGE).
Suggested Dilutions	WB: 1:500-1:1000 IHC: 1:50-1:200

Anti-SMIF (S133) DCP1A Antibody (A04587S133) Images



Western blot (WB) analysis of SMIF (S133) pAb at 1:500 dilution Lane1:HEK293T whole cell lysate(40ug) Lane2:HepG2 whole cell lysate(40ug) Lane3:H1792 whole cell lysate(40ug) Lane4:AML-12 whole cell lysate(40ug) Lane5:PC12 whole cell lysate(40ug)



Immunohistochemistry (IHC) analyzes of SMIF (S133) pAb in paraffin-embedded human liver carcinoma tissue at 1:50, showing cytoplasmic and nucleus staining. Negative control (the right) Using PBS instead of primary antibody, secondary antibody is Goat Anti-Rabbit IgG-biotin followed by avidin-peroxidase.

Submit a product review to [Biocompare.com](https://www.biocompare.com)

Submit a review of this product to [Biocompare.com](https://www.biocompare.com) to receive a \$20 Amazon.com giftcard! Your reviews help your fellow scientists make the right decisions. Thank you for your contribution.



Anti-SMIF (S133) DCP1A Antibody

For Research Use Only. Not for use in diagnostic procedures.