

Anti-SMPD3 Antibody Picoband®

Catalog Number: A04641

About SMPD3

Sphingomyelin phosphodiesterase 3 is an enzyme that in humans is encoded by the SMPD3 gene. SMPD3 (Sphingomyelin phosphodiesterase 3; also Neutral sphingomyelinase 2/nSMase2) is a 69-74 kDa member of the neutral sphingomyelinase family of enzymes. It is a monomeric Golgi/plasma membrane enzyme that converts sphingomyelin (a plasma membrane lipid) into ceramide and phosphorylcholine. This generates second messenger components that participate in signal transduction. Human SMPD3 is a two transmembrane, 655 amino acids molecule. It contains an N-terminal luminal segment (aa 1-10), a cytoplasmic region (aa 32-64), and one catalytic domain (aa 340-646). Phosphorylation increases its MW to 78 kDa in SDS-PAGE. There is one potential isoform that possesses an Asn substitution for aa 569-587. Over aa 2-655, human SMPD3 shares 91% aa sequence identity with mouse SMPD3.

Overview

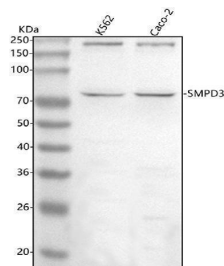
Product Name	Anti-SMPD3 Antibody Picoband®
Reactive Species	Human
Description	Boster Bio Anti-SMPD3 Antibody Picoband® catalog # A10547-2. Tested in WB, ELISA applications. This antibody reacts with Human. The brand Picoband indicates this is a premium antibody that guarantees superior quality, high affinity, and strong signals with minimal background in Western blot applications. Only our best-performing antibodies are designated as Picoband, ensuring unmatched performance.
Application	ELISA, WB
Clonality	Polyclonal
Formulation	Each vial contains 4 mg Trehalose, 0.9 mg NaCl, 0.2 mg Na ₂ HPO ₄ .
Storage Instructions	At -20°C for one year from date of receipt. After reconstitution, at 4°C for one month. It can also be aliquotted and stored frozen at -20°C for six months. Avoid repeated freezing and thawing.
Host	Rabbit
Uniprot ID	Q9NY59

Technical Details

Immunogen	E.coli-derived human SMPD3 recombinant protein (Position: F184-D553). Human SMPD3 shares 88.9% amino acid (aa) sequence identity with both mouse and rat SMPD3.
Recommended Detection Systems	Boster recommends Enhanced Chemiluminescent Kit with anti-Rabbit IgG (EK1002) for Western blot.
Cross Reactivity	No cross reactivity with other proteins.
Isotype	IgG

Form	Lyophilized
Concentration	Adding 0.2 ml of distilled water will yield a concentration of 500 µg/ml.
Purification	Immunogen affinity purified.
Suggested Dilutions	Western blot, 0.25-0.5 µg/ml, Human ELISA, 0.1-0.5 µg/ml, -

Anti-SMPD3 Antibody Picoband® (A04641) Images



Western blot analysis of SMPD3 using anti-SMPD3 antibody (A04641). Electrophoresis was performed on a 5-20% SDS-PAGE gel at 70V (Stacking gel) / 90V (Resolving gel) for 2-3 hours. The sample well of each lane was loaded with 30 ug of sample under reducing conditions. Lane 1: human K562 whole cell lysates, Lane 2: human Caco-2 whole cell lysates. After electrophoresis, proteins were transferred to a nitrocellulose membrane at 150 mA for 50-90 minutes. Blocked the membrane with 5% non-fat milk/TBS for 1.5 hour at RT. The membrane was incubated with rabbit anti-SMPD3 antigen affinity purified polyclonal antibody (Catalog # A04641) at 0.5 ug/mL overnight at 4°C, then washed with TBS-0.1%Tween 3 times with 5 minutes each and probed with a goat anti-rabbit IgG-HRP secondary antibody at a dilution of 1:5000 for 1.5 hour at RT. The signal is developed using an Enhanced Chemiluminescent detection (ECL) kit (Catalog # EK1002) with Tanon 5200 system. A specific band was detected for SMPD3 at approximately 75 kDa. The expected band size for SMPD3 is at 71 kDa.

Submit a product review to Biocompare.com

Submit a review of this product to Biocompare.com to receive a \$20 Amazon.com giftcard! Your reviews help your fellow scientists make the right decisions. Thank you for your contribution.



Anti-SMPD3 Antibody

For Research Use Only. Not for use in diagnostic procedures.