

Anti-PIWI-L2 Antibody

Catalog Number: A04654-1

About PIWIL2

PIWI-L2 is a member of the PIWI subfamily of Argonaute proteins, evolutionarily conserved proteins containing both PAZ and Piwi motifs that are crucial for the biogenesis and function of small non-coding RNAs and play important roles in stem cell self-renewal, RNA silencing, and translational regulation in diverse organisms. PIWI-L2 has been implicated in multiple roles including stem cell self-renewal and is highly expressed in many breast cancers. In these tumors, PIWI-L2 silences the expression of STAT3, a regulator of Bcl-XL and cyclin D1, allowing the proliferation and survival of breast cancer stem cells. Recent studies have shown that overexpression of PIWI-like proteins are potential biomarkers for colon and other cancers.

Overview

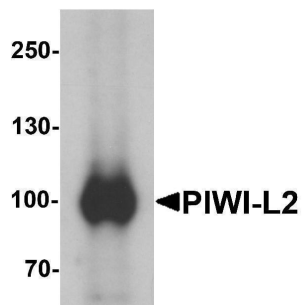
Product Name	Anti-PIWI-L2 Antibody
Reactive Species	Human, Mouse
Description	Boster Bio Anti-PIWI-L2 Antibody (Catalog # A04654-1). Tested in ELISA, WB, ICC, IF applications. This antibody reacts with Human, Mouse.
Application	ELISA, IF, ICC, WB
Clonality	Polyclonal
Formulation	PIWI-L2 Antibody is supplied in PBS containing 0.02% sodium azide.
Storage Instructions	PIWI-L2 antibody can be stored at 4°C for three months and -20°C, stable for up to one year. Avoid repeated freeze-thaw cycles. Antibodies should not be exposed to prolonged high temperatures.
Host	Rabbit
Uniprot ID	Q8TC59

Technical Details

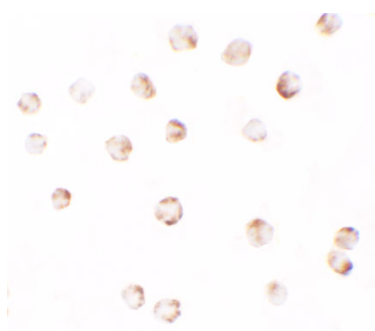
Immunogen	PIWI-L2 antibody was raised against a 17 amino acid synthetic peptide near the center of human PIWI-L2. The immunogen is located within amino acids 410 - 460 of PIWI-L2.
Predicted Reactive Species	Chicken, Rat
Cross Reactivity	At least three isoforms of PIWI-L2 are known to exist; this antibody will only detect the two longest isoforms. PIWI-L2 antibody is predicted to not cross-react with other PIWI protein family members.
Isotype	IgG
Form	Liquid
Concentration	1 mg/mL

Purification	PIWI-L2 Antibody is affinity chromatography purified via peptide column.
Suggested Dilutions	PIWI-L2 antibody can be used for detection of PIWI-L2 by Western blot at 1 ug/mL. Antibody validated: Western Blot in human samples; Immunocytochemistry in human samples and Immunofluorescence in human samples. All other applications and species not yet tested. Optimal dilutions for each application should be determined by the researcher.

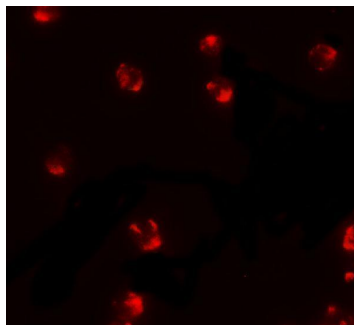
Anti-PIWI-L2 Antibody (A04654-1) Images



Western blot analysis of PIWI-L2 in HepG2 cell lysate with PIWI-L1 antibody at 1 ug/mL.



Immunocytochemistry of PIWI-L2 in HepG2 cells with PIWI-L2 antibody at 2.5 ug/ml.



Immunofluorescence of PIWI-L2 in HepG2 cells with PIWI-L2 antibody at 5 ug/ml.

Submit a product review to [Biocompare.com](https://www.biocompare.com)

Submit a review of this product to [Biocompare.com](https://www.biocompare.com) to receive a \$20 Amazon.com giftcard! Your reviews help your fellow scientists make the right decisions. Thank you for your contribution.



Anti-PIWI-L2 Antibody

For Research Use Only. Not for use in diagnostic procedures.