

Anti-ATP2A1 Antibody (C-term)

Catalog Number: A04657

About ATP2A1

ATP2A1 encodes one of the SERCA Ca (2+)-ATPases, which are intracellular pumps located in the sarcoplasmic or endoplasmic reticula of muscle cells. This enzyme catalyzes the hydrolysis of ATP coupled with the translocation of calcium from the cytosol to the sarcoplasmic reticulum lumen, and is involved in muscular excitation and contraction.

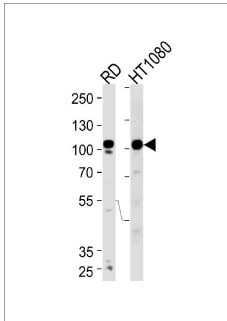
Overview

Product Name	Anti-ATP2A1 Antibody (C-term)
Reactive Species	Human
Description	Boster Bio Anti-ATP2A1 Antibody (C-term) (Catalog # A04657). Tested in WB, Flow Cytometry, IHC-P application(s). This antibody reacts with Human.
Application	Flow Cytometry, IHC-P, WB
Clonality	Polyclonal
Formulation	Purified polyclonal antibody supplied in PBS with 0.09% (W/V) sodium azide.
Storage Instructions	Maintain refrigerated at 2-8°C for up to 2 weeks. For long term storage, store at -20°C in small aliquots to prevent freeze-thaw cycles.
Host	Rabbit
Uniprot ID	O14983

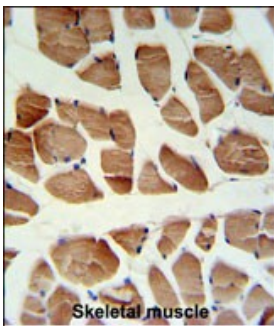
Technical Details

Immunogen	This ATP2A1 antibody is generated from rabbits immunized with a KLH conjugated synthetic peptide between 974-1001 amino acids from the C-terminal region of human ATP2A1.
Predicted Reactive Species	Rabbit
Isotype	Rabbit IgG
Purification	This antibody is purified through a protein A column, followed by peptide affinity purification
Suggested Dilutions	Dilute the sample so that the expected range of concentrations fall within the detection range of this kit. If the expected range of concentration is unknown, a pilot test should be conducted to decide the optimal dilution ratio for your samples. Some PubMed article(s) citing the expression level of this target are as follows: For protocols, please visit https://www.bosterbio.com/protocol-and-troubleshooting/

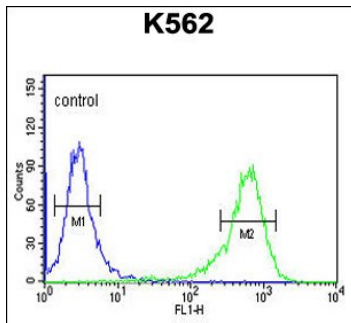
Anti-ATP2A1 Antibody (C-term) (A04657) Images



Western blot analysis of lysates from RD, HT1080 cell line (from left to right), using ATP2A1 Antibody (C-term). A04657 was diluted at 1:1000 at each lane. A goat anti-rabbit IgG H&L (HRP) at 1:5000 dilution was used as the secondary antibody. Lysates at 35ug per lane.



ATP2A1 Antibody (C-term) IHC analysis in formalin fixed and paraffin embedded human skeletal muscle followed by peroxidase conjugation of the secondary antibody and DAB staining. This data demonstrates the use of the ATP2A1 Antibody (C-term) for immunohistochemistry. Clinical relevance has not been evaluated.



ATP2A1 Antibody (C-term) flow cytometric analysis of K562 cells (right histogram) compared to a negative control cell (left histogram). FITC-conjugated goat-anti-rabbit secondary antibodies were used for the analysis.

Submit a product review to Biocompare.com

Submit a review of this product to Biocompare.com to receive a \$20 Amazon.com giftcard! Your reviews help your fellow scientists make the right decisions. Thank you for your contribution.



Anti-ATP2A1 Antibody (C-term)