

## Anti-BHLH3 Antibody (N-term)

Catalog Number: A04668-2

### About BHLHE41

BHLHE41 may be a transcriptional repressor that represses both basal and activated transcription.

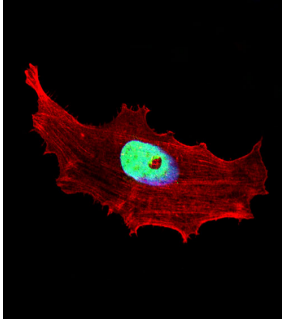
### Overview

|                      |  |
|----------------------|--|
| Product Name         | Anti-BHLH3 Antibody (N-term)   |
| Reactive Species     | Human, Mouse   |
| Description          | Boster Bio Anti-BHLH3 Antibody (N-term) (Catalog # A04668-2). Tested in WB, IF, Flow Cytometry application(s). This antibody reacts with Human, Mouse. |
| Application          | Flow Cytometry, IF, WB   |
| Clonality            | Polyclonal   |
| Formulation          | Purified polyclonal antibody supplied in PBS with 0.09% (W/V) sodium azide.  |
| Storage Instructions | Maintain refrigerated at 2-8°C for up to 2 weeks. For long-term storage, store at -20°C in small aliquots to prevent freeze-thaw cycles.               |
| Host                 | Rabbit   |
| Uniprot ID           | Q9C0J9   |

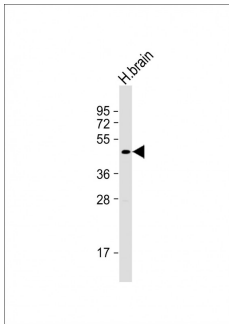
### Technical Details

|                            |  |
|----------------------------|--|
| Immunogen                  | This BHLH3 antibody is generated from rabbits immunized with a KLH conjugated synthetic peptide between 17-46 amino acids from the N-terminal region of human BHLH3. |
| Predicted Reactive Species | Rabbit   |
| Isotype                    | Rabbit IgG   |
| Purification               | This antibody is purified through a protein A column, followed by peptide affinity purification.   |
| Suggested Dilutions        | IF: 1:10-1:50<br>WB: 1:1000<br>FC: 1:10-1:50   |

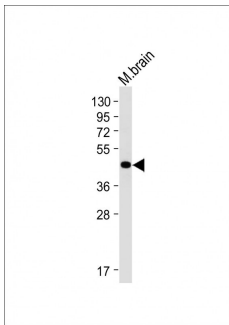
## Anti-BHLH3 Antibody (N-term) (A04668-2) Images



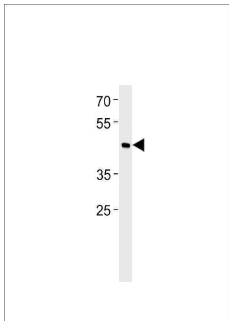
Fluorescent confocal image of MCF-7 cell stained with BHLH3 Antibody (N-term). MCF-7 cells were fixed with 4% PFA (20 min), permeabilized with Triton X-100 (0.1%, 10 min), then incubated with BHLH3 primary antibody (1:25, 1 h at 37°C). For secondary antibody, Alexa Fluor® 488 conjugated donkey anti-rabbit antibody (green) was used (1:400, 50 min at 37°C). Cytoplasmic actin was counterstained with Alexa Fluor® 555 (red) conjugated Phalloidin (7 units/ml, 1 h at 37°C). Nuclei were counterstained with DAPI (blue) (10 µg/ml, 10 min). BHLH3 immunoreactivity is localized to nucleus significantly.



Anti-BHLH3 Antibody (N-term) at 1:1000 dilution + human brain lysates/proteins at 20 µg per lane. Secondary Goat Anti-Rabbit IgG, (H+L), Peroxidase conjugated at 1/10000 dilution. Predicted band size : 50 kDa. Blocking/Dilution buffer: 5% NFD/MTBST.

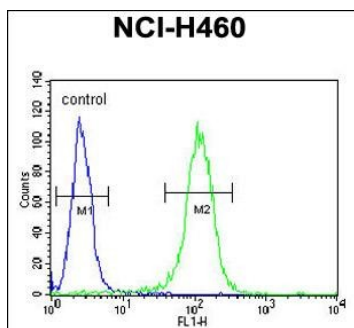


Anti-BHLH3 Antibody (N-term) at 1:2000 dilution + Mouse brain lysates/proteins at 20 µg per lane. Secondary Goat Anti-Rabbit IgG, (H+L), Peroxidase conjugated at 1/10000 dilution. Predicted band size : 50 kDa. Blocking/Dilution buffer: 5% NFD/MTBST.



BHLH3 Antibody (N-term) western blot analysis in RD cell line lysates (35 µg/lane). This demonstrates the BHE41 antibody detected the BHE41 protein (arrow).

BHLH3 Antibody (N-term) flow cytometric analysis of NCI-H460 cells (right histogram) compared to a negative control cell (left histogram). FITC-conjugated goat-anti-rabbit secondary antibodies were used for the analysis.



## Submit a product review to Biocompare.com

Submit a review of this product to Biocompare.com to receive a \$20 Amazon.com giftcard! Your reviews help your fellow scientists make the right decisions. Thank you for your contribution.



Anti-BHLH3 Antibody (N-term)

For Research Use Only. Not for use in diagnostic procedures.