

Anti-BRCC36 Antibody

Catalog Number: A04690

About BRCC3

Together with the breast and ovarian predisposition proteins BRCA1 and BRCA2 and RAD51 and BRCC45, BRCC36 forms a holoenzyme complex that possesses a ubiquitin E3 ligase activity. Aberrant levels of BRCC36 were detected in sporadic breast tumors and depletion of either BRCC36 or BRCC45 by siRNA resulted in increased sensitivity to ionizing radiation and defects in the G2/M checkpoint, indicating that BRCC36 acts to enhance cellular survival following DNA damage. Recent experiments have shown that BRCC36 is essential for ionizing radiation-induced BRCA1 phosphorylation and nuclear foci formation, suggesting that BRCC36 may be an important target in the treatment of radiation-resistant breast tumors. At least two isoforms of BRCC36 are known to exist.

Overview

Product Name	Anti-BRCC36 Antibody
Reactive Species	Human, Mouse, Rat
Description	Boster Bio Anti-BRCC36 Antibody (Catalog # A04690). Tested in ELISA, WB, IHC-P, IF applications. This antibody reacts with Human, Mouse, Rat.
Application	ELISA, IF, IHC-P, WB
Clonality	Polyclonal
Formulation	BRCC36 Antibody is supplied in PBS containing 0.02% sodium azide.
Storage Instructions	Antibody can be stored at 4°C up to one year. Antibodies should not be exposed to prolonged high temperatures.
Host	Rabbit
Uniprot ID	P46736

Technical Details

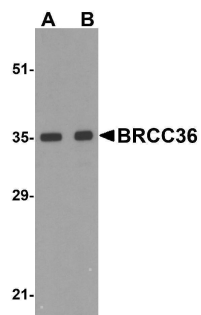
Immunogen	BRCC36 antibody was raised against a 18 amino acid synthetic peptide from near the amino terminus of human BRCC36. The immunogen is located within amino acids 20 - 70 of BRCC36.
Predicted Reactive Species	Bovine
Isotype	IgG
Form	Liquid
Concentration	1 mg/mL
Purification	BRCC36 Antibody is affinity chromatography purified via peptide column.

Suggested Dilutions

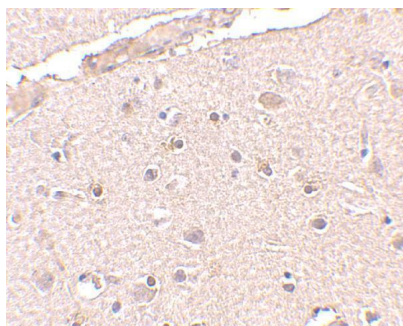
BRCC36 antibody can be used for detection of BRCC36 by Western blot at 0.5 - 2 ug/mL. Antibody can also be used for immunohistochemistry starting at 2.5 ug/mL. For immunofluorescence start at 20 ug/mL.

Antibody validated: Western Blot in human samples; Immunohistochemistry in human samples and Immunofluorescence in human samples. All other applications and species not yet tested. Optimal dilutions for each application should be determined by the researcher.

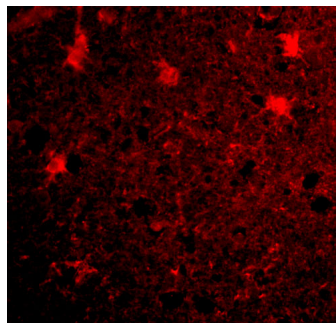
Anti-BRCC36 Antibody (A04690) Images



Western blot analysis of BRCC36 in MCF7 cell lysate with BRCC36 antibody at (A) 0.5 and (B) 1 ug/mL.



Immunohistochemistry of BRCC36 in human brain tissue with BRCC36 antibody at 2.5 ug/mL.



Immunofluorescence of BRCC36 in Human Brain cells with BRCC36 antibody at 20 ug/mL.

Submit a product review to [Biocompare.com](https://www.biocompare.com)

Submit a review of this product to [Biocompare.com](https://www.biocompare.com) to receive a \$20 Amazon.com giftcard! Your reviews help your fellow scientists make the right decisions. Thank you for your contribution.



Anti-BRCC36 Antibody

For Research Use Only. Not for use in diagnostic procedures.