

## Anti-CD238 KEL Antibody

Catalog Number: A04711

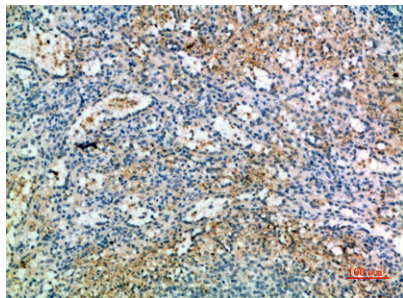
### Overview

Product Name	Anti-CD238 KEL Antibody
Reactive Species	Human, Mouse
Description	Boster Bio Anti-CD238 KEL Antibody catalog # A04711. Tested in WB, ELISA applications. This antibody reacts with Human, Mouse.
Application	ELISA, WB
Clonality	Polyclonal
Formulation	Liquid in PBS containing 50% glycerol, 0.5% stabilizing protein and 0.02% sodium azide. *This antibody is supplied in a stabilized formulation. Compatibility with conjugation reactions depends on the chemistry of the conjugation method used. For conjugation methods that are not compatible with the stabilizing components present in this formulation, a carrier-free antibody format is required.
Storage Instructions	Store at -20°C for one year. For short term storage and frequent use, store at 4°C for up to one month. Avoid repeated freeze-thaw cycles.
Host	Rabbit
Uniprot ID	P23276

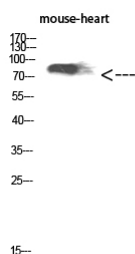
### Technical Details

Immunogen	The antiserum was produced against synthesized peptide derived from the Internal region of human KEL. AA range:351-400
Isotype	IgG
Form	Liquid
Concentration	1 mg/ml
Purification	Immunogen affinity purified
Suggested Dilutions	WB 1:500-2000 ELISA 1:10000-20000

## Anti-CD238 KEL Antibody (A04711) Images



Immunohistochemical analysis of paraffin-embedded human-spleen, antibody was diluted at 1:200



Western Blot analysis of mouse-heart cells using CD238 Polyclonal Antibody diluted at 1:1000. Secondary antibody was diluted at 1:20000

## Submit a product review to Biocompare.com

Submit a review of this product to Biocompare.com to receive a \$20 Amazon.com giftcard! Your reviews help your fellow scientists make the right decisions. Thank you for your contribution.



Anti-CD238 KEL Antibody

For Research Use Only. Not for use in diagnostic procedures.