

## Anti-SLC29A2 Antibody

Catalog Number: A04718

### About SLC29A2

SLC29A2 is a member of the equilibrative nucleoside transporter family which plays a key role in nucleoside and nucleobase uptake for salvage pathways of nucleotide synthesis (1,2). SLC29A2 is a transmembrane glycoprotein that mediates the cellular uptake of nucleosides from the surrounding medium (3). As a nucleoside transporter, SLC29A2 plays an important role in the uptake of nucleoside-based anti-cancer drugs; polymorphisms of point mutations in the gene encoding this protein may affect the efficacy of these drugs (4).

### Overview

Product Name	Anti-SLC29A2 Antibody
Reactive Species	Human
Description	Boster Bio Anti-SLC29A2 Antibody (Catalog # A04718). Tested in ELISA, WB, IHC-P, IF applications. This antibody reacts with Human.
Application	ELISA, IF, IHC-P, WB
Clonality	Polyclonal
Formulation	SLC29A2 antibody is supplied in PBS containing 0.02% sodium azide.
Storage Instructions	SLC29A2 antibody can be stored at 4°C for three months and -20°C, stable for up to one year.
Host	Rabbit
Uniprot ID	Q14542

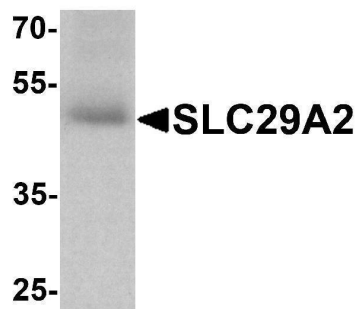
### Technical Details

Immunogen	SLC29A2 antibody was raised against a 19 amino acid peptide near the center of human SLC29A2. The immunogen is located within amino acids 250 - 300 of SLC29A2.
Predicted Reactive Species	Rat
Cross Reactivity	SLC29A2 antibody is human specific. SLC29A2 antibody is predicted to not cross-react with other SLC29 proteins.
Isotype	IgG
Form	Liquid
Concentration	1 mg/mL
Purification	SLC29A2 antibody is affinity chromatography purified via peptide column.
Suggested Dilutions	SLC29A2 antibody can be used for detection of SLC29A2 by Western blot at 1 - 2 ug/ml. Antibody

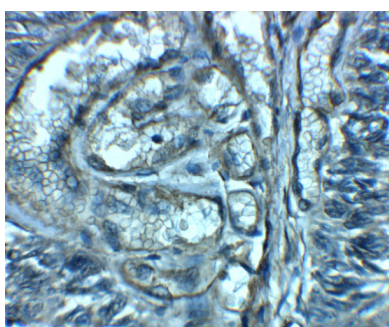
can also be used for immunohistochemistry starting at 2.5 ug/mL. For immunofluorescence start at 20 ug/mL.

Antibody validated: Western Blot in human samples; Immunohistochemistry in human samples and Immunofluorescence in human samples. All other applications and species not yet tested. Optimal dilutions for each application should be determined by the researcher.

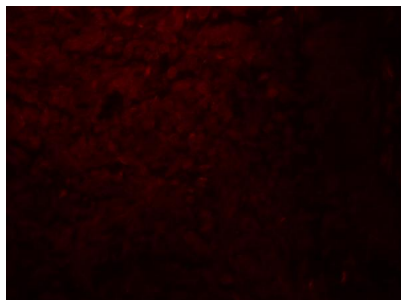
## Anti-SLC29A2 Antibody (A04718) Images



Western blot analysis of SLC29A2 in human bladder tissue lysate with SLC29A2 antibody at 1 ug/ml.



Immunohistochemistry of SLC29A2 in human bladder tissue with SLC29A2 antibody at 2.5 ug/mL.



Immunofluorescence of SLC29A2 in human bladder tissue with SLC29A2 antibody at 20 ug/ml.

### Submit a product review to [Biocompare.com](https://www.biocompare.com)

Submit a review of this product to [Biocompare.com](https://www.biocompare.com) to receive a \$20 Amazon.com giftcard! Your reviews help your fellow scientists make the right decisions. Thank you for your contribution.



Anti-SLC29A2 Antibody

For Research Use Only. Not for use in diagnostic procedures.