

Anti-Neutral ceramidase ASAH2 Antibody

Catalog Number: A04725

About ASAH2

Sphingolipids are hydrolyzed by ceramidases to yield sphingosine and fatty acids. These ceramidases are classified according to the pH range that supports their optimal activity. ASAH2 is a neutral ceramidase and key regulator of sphingolipid signaling metabolites at the cell surface, catalyzing the hydrolysis of the N-acyl linkage of ceramide at an optimal pH of 6.5-8.5. ASAH2 is a type II integral membrane protein that can be cleaved to yield a soluble secreted protein and acts as a repressor of apoptosis both by reducing C16-ceramide, thereby preventing ceramide-induced apoptosis, and generating sphingosine. Sphingosine exerts both mitogenic and apoptosis-inducing activities, and its phosphorylated form functions as an intra- and intercellular second messenger. ASAH2 is ubiquitously expressed primarily expressed with higher levels in the intestine, kidney, skeletal muscle and heart. Recent studies indicate that ASAH2 encoded neutral ceramidase is a key enzyme for the catabolism of dietary sphingolipids and regulates the levels of bioactive sphingolipid metabolites in the intestinal tract.

Overview

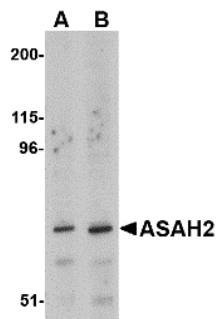
Product Name	Anti-Neutral ceramidase ASAH2 Antibody
Reactive Species	Human, Mouse, Rat
Description	Boster Bio Anti-Neutral ceramidase ASAH2 Antibody (Catalog # A04725). Tested in ELISA, WB applications. This antibody reacts with Human, Mouse, Rat.
Application	ELISA, WB
Clonality	Polyclonal
Formulation	ASAH2 Antibody is supplied in PBS containing 0.02% sodium azide.
Storage Instructions	ASAH2 antibody can be stored at 4°C for three months and -20°C, stable for up to one year. Avoid repeated freeze-thaw cycles. Antibodies should not be exposed to prolonged high temperatures.
Host	Rabbit
Uniprot ID	Q9NR71

Technical Details

Immunogen	ASAH2 antibody was raised against a 17 amino acid synthetic peptide near the carboxy terminus of the human ASAH2. The immunogen is located within the last 50 amino acids of ASAH2.
Predicted Reactive Species	Rat
Isotype	IgG
Form	Liquid
Concentration	1 mg/mL

Purification	ASAH2 Antibody is affinity chromatography purified via peptide column.
Suggested Dilutions	ASAH2 antibody can be used for detection of ASAH2 by Western blot at 1 and 2 ug/mL. Antibody validated: Western Blot in human samples. All other applications and species not yet tested. Optimal dilutions for each application should be determined by the researcher.

Anti-Neutral ceramidase ASAH2 Antibody (A04725) Images



Western blot analysis of ASAH2 in 293 cell lysate with ASAH2 antibody at (A) 1 and (B) 2 ug/mL.

Submit a product review to Biocompare.com

Submit a review of this product to Biocompare.com to receive a \$20 Amazon.com giftcard! Your reviews help your fellow scientists make the right decisions. Thank you for your contribution.



Anti-Neutral ceramidase ASAH2 Antibody

For Research Use Only. Not for use in diagnostic procedures.