

Anti-MACC1 Antibody

Catalog Number: A04732

About MACC1

Metastasis associated in colon cancer 1 (MACC1) is a key regulator of the hepatocyte growth factor (HGF)-HGF receptor (MET) pathway, which is involved in cellular growth, epithelial-mesenchymal transition, angiogenesis, cell motility, invasiveness, and metastasis. MACC1 protein consists of four domains: ZU5, SH3, and two C-terminal death domains (DD). Expression of MACC1 was found significantly upregulated in malignant tissues (colon cancer of all stages as well as liver and lung metastases) compared to normal tissues or adenomas. MACC1 represents an early and crucial prognostic indicator for colon cancer metastasis that is independent of age, sex, tumor infiltration, nodal status, and lymph vessel invasion. Besides its involvement in signal transduction with the MET receptor, MACC1 also links MET signaling and apoptosis. MACC1 may also be an important therapeutic target for colorectal cancer treatment.

Overview

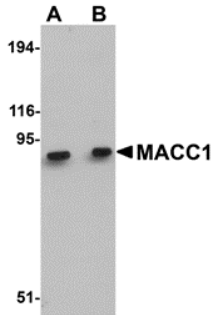
Product Name	Anti-MACC1 Antibody
Reactive Species	Human, Mouse, Rat
Description	Boster Bio Anti-MACC1 Antibody (Catalog # A04732). Tested in ELISA, WB, IHC-P, IF applications. This antibody reacts with Human, Mouse, Rat.
Application	ELISA, IF, IHC-P, WB
Clonality	Polyclonal
Formulation	MACC1 Antibody is supplied in PBS containing 0.02% sodium azide.
Storage Instructions	Antibody can be stored at 4°C up to one year. Antibodies should not be exposed to prolonged high temperatures.
Host	Rabbit
Uniprot ID	Q6ZN28

Technical Details

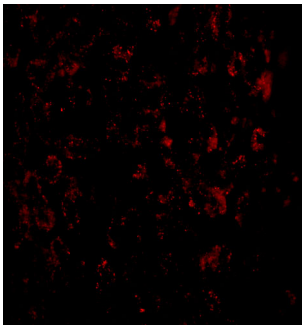
Immunogen	MACC1 antibody was raised against a 17 amino acid synthetic peptide near the center of human MACC1. The immunogen is located within amino acids 430 - 480 of MACC1.
Predicted Reactive Species	Rat
Cross Reactivity	At least two isoforms of MACC1 are known to exist.
Isotype	IgG
Form	Liquid
Concentration	1 mg/mL

Purification	MACC1 Antibody is affinity chromatography purified via peptide column.
Suggested Dilutions	MACC1 antibody can be used for detection of MACC1 by Western blot at 1 - 2 ug/mL. Antibody can also be used for immunohistochemistry starting at 2.5 ug/mL. For immunofluorescence start at 20 ug/mL. Antibody validated: Western Blot in human and mouse samples; Immunohistochemistry in human samples and Immunofluorescence in human samples. All other applications and species not yet tested. Optimal dilutions for each application should be determined by the researcher.

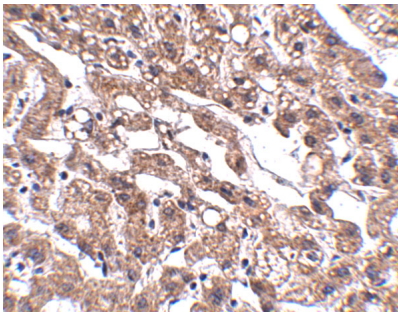
Anti-MACC1 Antibody (A04732) Images



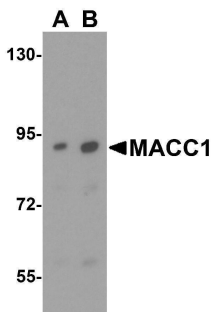
Western blot analysis of MACC1 in mouse liver tissue lysate with MACC1 antibody at (A) 1 and (B) 2 ug/mL.



Immunofluorescence of MACC1 in Human Liver cells with MACC1 antibody at 20 ug/mL.



Immunohistochemistry of MACC1 in human liver tissue with MACC1 antibody at 2.5 ug/mL.



Western blot analysis of MACC1 expression in human liver tissue lysate with MACC1 antibody at (A) 1 and (B) 2 ug/ml.

Submit a product review to [Biocompare.com](https://www.biocompare.com)

Submit a review of this product to [Biocompare.com](https://www.biocompare.com) to receive a \$20 Amazon.com giftcard! Your reviews help your fellow scientists make the right decisions. Thank you for your contribution.



Anti-MACC1 Antibody

For Research Use Only. Not for use in diagnostic procedures.