

## Anti-PI-9 SERPINB9 Antibody

Catalog Number: A04734

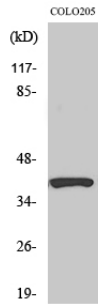
### Overview

Product Name	Anti-PI-9 SERPINB9 Antibody
Reactive Species	Human, Mouse, Rat
Description	Boster Bio Anti-PI-9 SERPINB9 Antibody catalog # A04734. Tested in ELISA, IHC, WB applications. This antibody reacts with Human, Mouse, Rat.
Application	ELISA, IF, IHC, WB
Clonality	Polyclonal
Formulation	Liquid in PBS containing 50% glycerol, 0.5% stabilizing protein and 0.02% sodium azide. *This antibody is supplied in a stabilized formulation. Compatibility with conjugation reactions depends on the chemistry of the conjugation method used. For conjugation methods that are not compatible with the stabilizing components present in this formulation, a carrier-free antibody format is required.
Storage Instructions	Store at -20°C for one year. For short term storage and frequent use, store at 4°C for up to one month. Avoid repeated freeze-thaw cycles.
Host	Rabbit
Uniprot ID	P50453

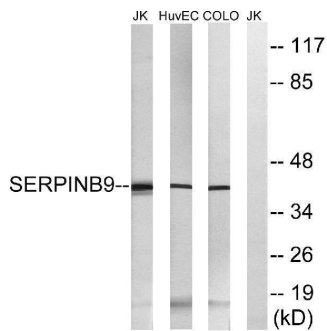
### Technical Details

Immunogen	The antiserum was produced against synthesized peptide derived from human SERPINB9. AA range:241-290
Isotype	IgG
Form	Liquid
Concentration	1 mg/ml
Purification	The antibody was affinity-purified from rabbit antiserum by affinity-chromatography using epitope-specific immunogen.
Suggested Dilutions	WB 1:500-1:2000 IHC: 1:100-300 ELISA 1:20000 IF 1:100-300

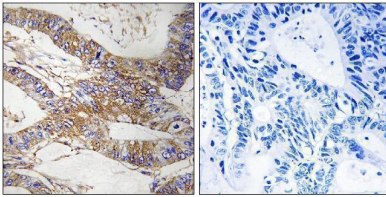
## Anti-PI-9 SERPINB9 Antibody (A04734) Images



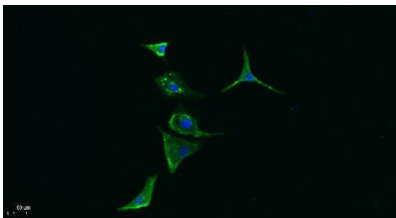
Western Blot analysis of various cells using PI-9 Polyclonal Antibody diluted at 1:1000



Western blot analysis of lysates from COLO, HUVEC, and Jurkat cells, using SERPINB9 Antibody. The lane on the right is blocked with the synthesized peptide.



Immunohistochemistry analysis of paraffin-embedded human colon carcinoma tissue, using SERPINB9 Antibody. The picture on the right is blocked with the synthesized peptide.



Immunofluorescence analysis of A549. 1, primary Antibody was diluted at 1:200 (4°C overnight). 2, Goat Anti Rabbit IgG (H&L) - Alexa Fluor 488 Secondary antibody was diluted at 1:1000 (room temperature, 50min).3, Picture B: DAPI (blue) 10min.

Submit a product review to [Biocompare.com](https://www.biocompare.com)

Submit a review of this product to [Biocompare.com](https://www.biocompare.com) to receive a \$20 Amazon.com giftcard! Your reviews help your fellow scientists make the right decisions. Thank you for your contribution.



Anti-PI-9 SERPINB9 Antibody

For Research Use Only. Not for use in diagnostic procedures.