

Anti-TEM1 CD248 Antibody

Catalog Number: A04735

About CD248

Tumor endothelial marker (TEM) 1 was originally identified as a human embryonic fibroblast-specific antigen and was later determined to be endosialin, a single-pass transmembrane glycoprotein that has multiple extracellular domains, including three EGF-like domains, a sushi-like domain, and a C lectin-like domain. TEM proteins are significantly up-regulated during angiogenesis and neoangiogenesis that are crucial for the growth of solid tumors. While TEM1 is not required for angiogenesis during fetal development, postnatal growth or wound healing, it plays a role in tumor growth, invasion, and metastasis. Fibronectin and collagen types I and IV act as specific ligands of TEM1, leading to suggestions that these molecules may cause changes in the extracellular matrix, cell adhesion and migration during tumor invasion.

Overview

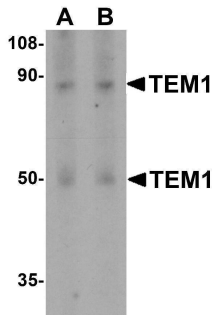
Product Name	Anti-TEM1 CD248 Antibody
Reactive Species	Human
Description	Boster Bio Anti-TEM1 CD248 Antibody (Catalog # A04735). Tested in ELISA, WB, IHC-P, IF applications. This antibody reacts with Human.
Application	ELISA, IF, IHC-P, WB
Clonality	Polyclonal
Formulation	TEM1 Antibody is supplied in PBS containing 0.02% sodium azide.
Storage Instructions	TEM1 antibody can be stored at 4°C up to one year. Antibodies should not be exposed to prolonged high temperatures.
Host	Rabbit
Uniprot ID	Q9HCU0

Technical Details

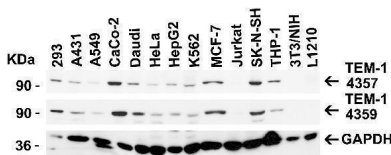
Immunogen	Anti-TEM-1 antibody was raised against a peptide corresponding to 14 amino acids near the carboxy terminus of human TEM-1. The immunogen is located within the last 50 amino acids of TEM-1.
Predicted Reactive Species	Mouse, Rat
Cross Reactivity	At least two isoforms of TEM1 are known to exist; this antibody recognizes both isoforms.
Isotype	IgG
Form	Liquid
Concentration	1 mg/mL

Purification	TEM1 Antibody is affinity chromatography purified via peptide column.
Suggested Dilutions	WB: 0.5-2 ug/mL; IHC-P: 2.5 ug/mL; IF: 20 ug/mL. Antibody validated: Western Blot in human and mouse samples; Immunohistochemistry in human samples and Immunofluorescence in human samples. All other applications and species not yet tested. Optimal dilutions for each application should be determined by the researcher.

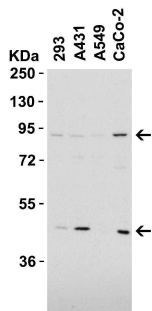
Anti-TEM1 CD248 Antibody (A04735) Images



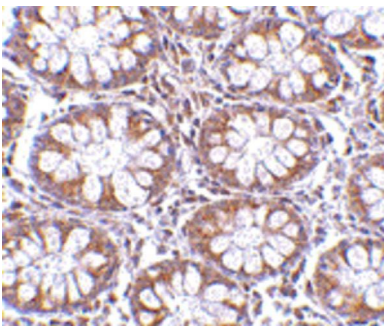
Western Blot Validation in Human Colon Tissue Loading: 15 ug of lysates per lane. Antibodies: TEM-1 A04735, (A, 0.5 ug/mL; B, 1 ug/mL), 1h incubation at RT in 5% NFDm/TBST. Secondary: Goat anti-rabbit IgG HRP conjugate at 1:10000 dilution.



Independent Antibody Validation (IAV) via Protein Expression Profile in Cell Lines Loading: 15 ug of lysates per lane. Antibodies: TEM-1 A04735, (2 ug/mL), TEM-1 4359, (1 ug/mL), and GAPDH (0.02 ug/mL), 1h incubation at RT in 5% NFDm/TBST. Secondary: Goat anti-rabbit IgG HRP conjugate at 1:10000 dilution.



Western Blot Validation in Human Cell Lines Loading: 15 ug of lysates per lane. Antibodies: TEM-1 A04735, (2 ug/mL), 1h incubation at RT in 5% NFDm/TBST. Secondary: Goat anti-rabbit IgG HRP conjugate at 1:10000 dilution.



Immunohistochemistry Validation of TEM-1 in Human Colon Tissue Immunohistochemical analysis of paraffin-embedded Human Colon tissue using anti-TEM-1 antibody (A04735) at 2.5 ug/ml. Tissue was fixed with formaldehyde and blocked with 10% serum for 1 h at RT; antigen retrieval was by heat mediation with a citrate buffer (pH6). Samples were incubated with primary antibody overnight at 4°C. A goat anti-rabbit IgG H&L (HRP) at 1/250 was used as secondary. Counter stained with Hematoxylin.



Immunofluorescence Validation of TEM-1 in Human Colon Tissue Immunofluorescent analysis of 4% paraformaldehyde-fixed Human Colon Tissue labeling TEM-1 with A04735 at 20 ug/mL, followed by goat anti-rabbit IgG secondary antibody at 1/500 dilution (red).

Submit a product review to Biocompare.com

Submit a review of this product to Biocompare.com to receive a \$20 Amazon.com giftcard! Your reviews help your fellow scientists make the right decisions. Thank you for your contribution.



Anti-TEM1 CD248 Antibody

For Research Use Only. Not for use in diagnostic procedures.