

Anti-Homeobox protein Nkx-2.2 NKX2-2 Antibody

Catalog Number: A04740

About NKX2-2

NKX2-2 (NK2 homeobox 2) is a member of a family of transcription factors that are involved in embryonic development and cell fate. NKX2-2 is crucial in the development of pancreatic islet cell differentiation and activates the ghrelin-promoter in these cells. NKX2-2 is expressed at the onset of pancreatic epithelium formation and becomes restricted to mature alpha-, beta- and PP cells, and in NKX2-2-null mice embryos, all beta-cells and most a-cells are replaced by ghrelin-positive cells. NKX2-2 is also thought to be involved in ventral neuronal patterning and floor plate development and commissural axon guidance.

Overview

Product Name	Anti-Homeobox protein Nkx-2.2 NKX2-2 Antibody
Reactive Species	Human, Mouse, Rat
Description	Boster Bio Anti-Homeobox protein Nkx-2.2 NKX2-2 Antibody (Catalog # A04740). Tested in ELISA, WB, IHC-P, IF applications. This antibody reacts with Human, Mouse, Rat.
Application	ELISA, IF, IHC-P, WB
Clonality	Polyclonal
Formulation	NKX2-2 Antibody is supplied in PBS containing 0.02% sodium azide.
Storage Instructions	NKX2-2 antibody can be stored at 4°C for three months and -20°C, stable for up to one year. Avoid repeated freeze-thaw cycles. Antibodies should not be exposed to prolonged high temperatures.
Host	Rabbit
Uniprot ID	O95096

Technical Details

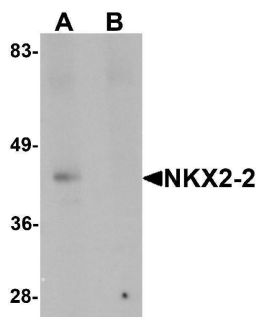
Immunogen	NKX2-2 antibody was raised against a 19 amino acid synthetic peptide near the center of human NKX2-2. The immunogen is located within amino acids 90 - 140 of NKX2-2.
Predicted Reactive Species	Mouse, Rat
Cross Reactivity	NKX2-2 antibody is predicted to not cross-react with other NK2 homeobox family members.
Isotype	IgG
Form	Liquid
Concentration	1 mg/mL
Purification	NKX2-2 Antibody is affinity chromatography purified via peptide column.

Suggested Dilutions

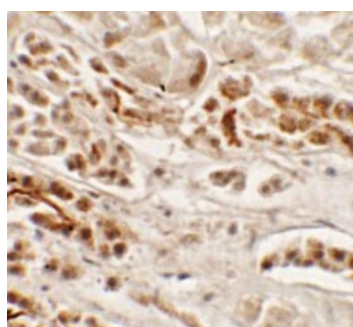
NKX2-2 antibody can be used for detection of NKX2-2 by Western blot at 1 ug/mL. Antibody can also be used for immunohistochemistry starting at 2.5 ug/mL. For immunofluorescence start at 20 ug/mL.

Antibody validated: Western Blot in rat samples; Immunohistochemistry in human samples and Immunofluorescence in human samples. All other applications and species not yet tested. Optimal dilutions for each application should be determined by the researcher.

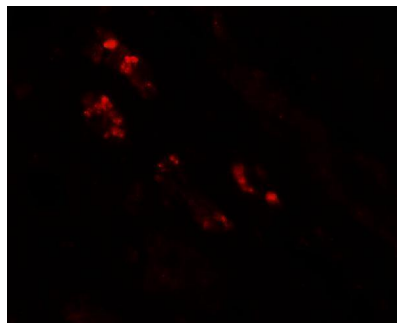
Anti-Homeobox protein Nkx-2.2 NKX2-2 Antibody (A04740) Images



Western blot analysis of NKX2-2 in rat kidney tissue lysate with NKX2-2 antibody at 1 ug/mL in (A) the absence and (B) the presence of blocking peptide.



Immunohistochemistry of NKX2-2 in human kidney tissue with NKX2-2 antibody at 2.5 ug/mL.



Immunofluorescence of NKX2-2 in human kidney tissue with NKX2-2 antibody at 20 ug/mL.

Submit a product review to [Biocompare.com](https://www.biocompare.com)

Submit a review of this product to [Biocompare.com](https://www.biocompare.com) to receive a \$20 Amazon.com giftcard! Your reviews help your fellow scientists make the right decisions. Thank you for your contribution.



Anti-Homeobox protein Nkx-2.2 NKX2-2 Antibody

For Research Use Only. Not for use in diagnostic procedures.