

## Anti-SLIT-3 Antibody

Catalog Number: A04745

### About SLIT3

SLIT-3 (also known as multiple epidermal growth factor-like domain 5 and Slit homolog 3 protein) is a Slit protein. The 'slit' gene has been shown to play a critical role in central nervous system midline formation. In addition to SLIT3 there are two additional human 'slit' homologs, which are termed SLIT1 and SLIT2. Each SLIT gene encodes a putative secreted protein, which contains conserved protein-protein interaction domains including leucine-rich repeats and epidermal growth factor-like motifs, similar to those of the Drosophila protein. SLIT proteins may also participate in the formation and maintenance of the nervous and endocrine systems by protein-protein interactions. Slit-3 is a secreted protein predominantly expressed in thyroid. Multiple isoforms have been reported for this product.

### Overview

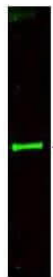
Product Name	Anti-SLIT-3 Antibody
Reactive Species	Bovine, Canine, Human, Mouse, Rat
Description	Boster Bio Anti-SLIT-3 Antibody (Catalog # A04745). Tested in ELISA, WB applications. This antibody reacts with Human, Mouse, Rat, Bovine, Dog.
Application	ELISA, WB
Clonality	Polyclonal
Formulation	0.02 M Potassium Phosphate, 0.15 M Sodium Chloride, pH 7.2, 0.01% (w/v) Sodium Azide
Storage Instructions	Store vial at -20°C prior to opening. Aliquot contents and freeze at -20°C or below for extended storage. Avoid cycles of freezing and thawing. Centrifuge product if not completely clear after standing at room temperature. This product is stable for several weeks at 4°C as an undiluted liquid. Dilute only prior to immediate use. Expiration date is one (1) year from date of opening. (Ship on dry ice.)
Host	Rabbit
Uniprot ID	O75094

### Technical Details

Immunogen	This affinity purified antibody was prepared from whole rabbit serum produced by repeated immunizations with a synthetic peptide corresponding to an internal region near aa 1155-1180 of Human SLIT-3 protein.
Predicted Reactive Species	Bovine, Canine
Cross Reactivity	No cross reactivity with other proteins.
Isotype	IgG

Form	Liquid (sterile filtered)
Concentration	0.752 mg/mL by UV absorbance at 280 nm
Purification	This affinity purified antibody is directed against human SLIT-3 protein. The product was affinity purified from monospecific antiserum by immunoaffinity purification. A BLAST analysis was used to suggest reactivity with this protein from human, rat, dog, bovine and mouse based on 100% homology for the immunogen sequence. Expect cross-reactivity with SLIT-3 from chimpanzee and chicken sources, as only a single amino acid residue change is found within the immunogen sequence (93% positive by BLAST). Cross-reactivity with SLIT-3 homologues from other sources has not been determined.
Suggested Dilutions	ELISA: 1:2,000 - 1:10,000 WB: 1:500 - 1:2,000 This affinity purified antibody has been tested for use in ELISA and by western blot. Specific conditions for reactivity should be optimized by the end user. Expect a band at ~ 168 kDa corresponding to full length protein as well as multiple bands corresponding to isoforms of SLIT-3 by western blotting in the appropriate cell lysate or extract.

## Anti-SLIT-3 Antibody (A04745) Images



Western blot using Boster's Affinity Purified anti-SLIT-3 antibody shows detection of a predominant band at ~145 kDa corresponding to SLIT-3 (arrowhead) in a bovine thyroid whole cell lysate using the 800 nm channel (green). ~ 35 ug of lysate was separated on a 4-8% Tricine gel by SDS-PAGE and transferred onto nitrocellulose. After blocking the membrane was probed with the primary antibody diluted to 1:800. Incubation was for 2 h at room temperature followed by washes and reaction with a 1:10,000 dilution of IRDye™ 800 conjugated Gt-a-Rabbit IgG [H&L] MXHu (611-432-122) for 45 min at room temperature. Molecular weight markers were used for size comparison using the 700 nm channel (not shown). IRDye800 fluorescence image was captured using the Odyssey® Infrared Imaging System developed by LI-COR. IRDye is a trademark of LI-COR, Inc. Other detection systems will yield similar results.

### Submit a product review to Biocompare.com

Submit a review of this product to Biocompare.com to receive a \$20 Amazon.com giftcard! Your reviews help your fellow scientists make the right decisions. Thank you for your contribution.



Anti-SLIT-3 Antibody

For Research Use Only. Not for use in diagnostic procedures.