

Anti-SLC25A12 Antibody

Catalog Number: A04746-1

About SLC25A12

Sequence-specific transcription factor which is part of a developmental regulatory system that provides cells with specific positional identities on the anterior-posterior axis. Acts on the anterior body structures.

Acampora D., Nucleic Acids Res. 17:10385-10402(1989).

Boncinelli E., Genome 31:745-756(1989).

Piper D.E., Cell 96:587-597(1999).

Overview

Product Name	Anti-SLC25A12 Antibody
Reactive Species	Human, Rat
Description	Boster Bio Anti-SLC25A12 Antibody catalog # A04746-1. Tested in WB,IHC applications. This antibody reacts with Human,Rat.
Application	IHC, WB
Clonality	Polyclonal
Formulation	Rabbit IgG, 1mg/ml in PBS with 0.02% sodium azide, 50% glycerol, pH7.2
Storage Instructions	Store at -20°C for one year. For short term storage and frequent use, store at 4°C for up to one month. Avoid repeated freeze-thaw cycles.
Host	Rabbit
Uniprot ID	O75746

Technical Details

Immunogen	Synthesized peptide derived from human Slit3.
Predicted Reactive Species	Boar, Bovine, Canine, Golden Hamster
Isotype	IgG
Form	Liquid
Concentration	1 mg/ml
Purification	The antibody was affinity-purified from rabbit antiserum by affinity-chromatography using epitope-specific immunogen and the purity is > 95% (by SDS-PAGE).

Suggested Dilutions

Dilute the sample so that the expected range of concentrations fall within the detection range of this kit.

If the expected range of concentration is unknown, a pilot test should be conducted to decide the optimal dilution ratio for your samples.

Some PubMed article(s) citing the expression level of this target are as follows:

Boster Bio's internal QC testing used:

WB: 1:500-1:1000

IHC: 1:50-1:200

Anti-SLC25A12 Antibody (A04746-1) Images

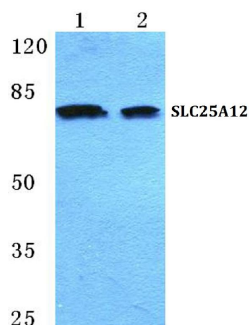


Figure 1. Western blotting validation for Anti-SLC25A12 Antibody A04746-1

Western blot (WB) analysis of SLC25A12 polyclonal antibody at 1:500 dilution
Lane1: Jurkat cell lysate
Lane2: Rat liver tissue lysate
Electrophoresis was performed on a SDS-PAGE gel. To determine SDS-PAGE gel concentration

Submit a product review to Biocompare.com

Submit a review of this product to Biocompare.com to receive a \$20 Amazon.com giftcard! Your reviews help your fellow scientists make the right decisions. Thank you for your contribution.



Anti-SLC25A12 Antibody