

Anti-SMCHD1 Antibody Picoband®

Catalog Number: A04751-1

About SMCHD1

Structural Maintenance of Chromosomes flexible Hinge Domain Containing 1 (SMCHD1) is a protein that in humans is encoded by the SMCHD1 gene. This gene encodes a protein which contains a hinge region domain found in members of the SMC (structural maintenance of chromosomes) protein family.

Overview

Product Name	Anti-SMCHD1 Antibody Picoband®
Reactive Species	Human
Description	Boster Bio Anti-SMCHD1 Antibody Picoband® catalog # A04751-1. Tested in ELISA, IF, ICC, WB applications. This antibody reacts with Human. The brand Picoband indicates this is a premium antibody that guarantees superior quality, high affinity, and strong signals with minimal background in Western blot applications. Only our best-performing antibodies are designated as Picoband, ensuring unmatched performance.
Application	ELISA, IF, ICC, WB
Clonality	Polyclonal
Formulation	Each vial contains 4 mg Trehalose, 0.9 mg NaCl, 0.2 mg Na ₂ HPO ₄ .
Storage Instructions	At -20°C for one year from date of receipt. After reconstitution, at 4°C for one month. It can also be aliquotted and stored frozen at -20°C for six months. Avoid repeated freezing and thawing.
Host	Rabbit
Uniprot ID	A6NHR9

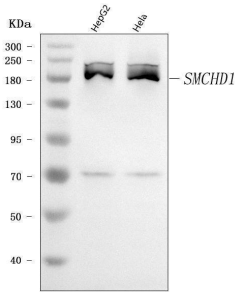
Technical Details

Immunogen	E.coli-derived human SMCHD1 recombinant protein (Position: Q655-D1765).
Recommended Detection Systems	Boster recommends Enhanced Chemiluminescent Kit with anti-Rabbit IgG (EK1002) for Western blot, and HRP Conjugated anti-Rabbit IgG Super Vision Assay Kit (SV0002-1) for ICC.
Cross Reactivity	No cross-reactivity with other proteins.
Isotype	Rabbit IgG
Form	Lyophilized
Concentration	Adding 0.2 ml of distilled water will yield a concentration of 500 µg/ml.
Purification	Immunogen affinity purified.

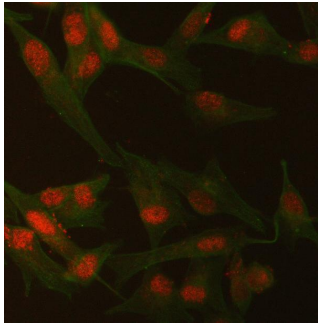
Suggested Dilutions

Western blot, 0.25-0.5 ug/ml, Human
Immunocytochemistry/Immunofluorescence, 5 ug/ml, Human
ELISA, 0.1-0.5 ug/ml, -

Anti-SMCHD1 Antibody Picoband® (A04751-1) Images



Western blot analysis of SMCHD1 using anti-SMCHD1 antibody (A04751-1). Electrophoresis was performed on a 5-20% SDS-PAGE gel at 70V (Stacking gel) / 90V (Resolving gel) for 2-3 hours. The sample well of each lane was loaded with 30 ug of sample under reducing conditions. Lane 1: human HepG2 whole cell lysates, Lane 2: human Hela whole cell lysates. After electrophoresis, proteins were transferred to a nitrocellulose membrane at 150 mA for 50-90 minutes. Blocked the membrane with 5% non-fat milk/TBS for 1.5 hour at RT. The membrane was incubated with rabbit anti-SMCHD1 antigen affinity purified polyclonal antibody (Catalog # A04751-1) at 0.5 ug/mL overnight at 4°C, then washed with TBS-0.1%Tween 3 times with 5 minutes each and probed with a goat anti-rabbit IgG-HRP secondary antibody at a dilution of 1:5000 for 1.5 hour at RT. The signal is developed using an Enhanced Chemiluminescent detection (ECL) kit (Catalog # EK1002) with Tanon 5200 system. A specific band was detected for SMCHD1 at approximately 226 kDa. The expected band size for SMCHD1 is at 226 kDa.



IF analysis of SMCHD1 and Tubulin beta using anti-SMCHD1 antibody (A04514-2) and anti-Tubulin beta antibody (M05613-4). SMCHD1 and Tubulin beta was detected in an immunocytochemical section of U87 cells. Enzyme antigen retrieval was performed using IHC enzyme antigen retrieval reagent (AR0022) for 15 mins. The cells were blocked with 10% goat serum. And then incubated with 5 ug/mL rabbit anti-SMCHD1 Antibody (A04514-2) and mouse anti-Tubulin beta Antibody (M05613-4) overnight at 4°C. Cy3 Conjugated Goat Anti-Rabbit IgG (BA1032) and DyLight®488 Conjugated Goat Anti-Mouse IgG (BA1126) were used as secondary antibody at 1:500 dilution and incubated for 30 minutes at 37°C. Visualize using a fluorescence microscope and filter sets appropriate for the label used.

Submit a product review to [Biocompare.com](https://www.biocompare.com)

Submit a review of this product to [Biocompare.com](https://www.biocompare.com) to receive a \$20 Amazon.com giftcard! Your reviews help your fellow scientists make the right decisions. Thank you for your contribution.



Anti-SMCHD1 Antibody

For Research Use Only. Not for use in diagnostic procedures.