

Anti-Cofilin1/2 (T88) CFL2 Antibody

Catalog Number: A04773T88

About CFL2

Involved in the biosynthesis of glycosaminoglycans; hyaluronan, chondroitin sulfate, and heparan sulfate.

Spicer A.P., J. Biol. Chem. 273:25117-25124(1998).

Peng H.L., Proc. Natl. Sci. Counc. Repub. China, B, Life Sci. 22:166-172(1998).

Chang M.L., Submitted (FEB-2000) to the EMBL/GenBank/DDBJ databases.

Overview

Product Name	Anti-Cofilin1/2 (T88) CFL2 Antibody
Reactive Species	Human, Mouse, Rat
Description	Boster Bio Anti-Cofilin1/2 (T88) CFL2 Antibody catalog # A04773T88. Tested in WB,IF applications. This antibody reacts with Human,Mouse,Rat.
Application	IF, WB
Clonality	Polyclonal
Formulation	Rabbit IgG, 1mg/ml in PBS with 0.02% sodium azide, 50% glycerol, pH7.2
Storage Instructions	Store at -20°C for one year. For short term storage and frequent use, store at 4°C for up to one month. Avoid repeated freeze-thaw cycles.
Host	Rabbit
Uniprot ID	Q9Y281/P23528

Technical Details

Immunogen	Synthesized peptide derived from internal of human UGDH.
Predicted Reactive Species	Boar, Bovine, Canine, Golden Hamster
Isotype	IgG
Form	Liquid
Concentration	1 mg/ml
Purification	The antibody was affinity-purified from rabbit antiserum by affinity-chromatography using epitope-specific immunogen and the purity is > 95% (by SDS-PAGE).
Suggested Dilutions	Dilute the sample so that the expected range of concentrations fall within the detection range of this kit.

If the expected range of concentration is unknown, a pilot test should be conducted to decide the optimal dilution ratio for your samples.

Some PubMed article(s) citing the expression level of this target are as follows:

Boster Bio's internal QC testing used:

WB: 1:500-1:1000

IF: 1:50-1:200

Anti-Cofilin1/2 (T88) CFL2 Antibody (A04773T88) Images

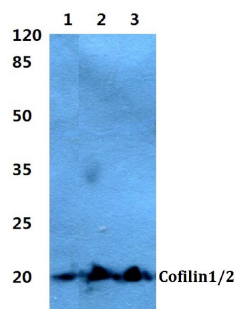


Figure 1. Western blotting validation for Anti-Cofilin1/2 (T88) CFL2 Antibody A04773T88

Western blot (WB) analysis of Cofilin1/2 (T88) polyclonal antibody at 1:500 dilution

Lane1:A549 cell lysate

Lane2:Mouse heart tissue lysate

Lane3:Rat heart tissue lysate

Electrophoresis was performed on a SDS-PAGE gel. To determine SDS-PAGE gel concentration

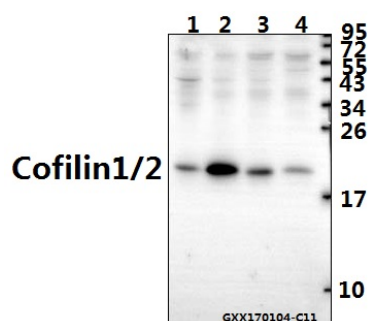


Figure 2. Western blotting validation for Anti-Cofilin1/2 (T88) CFL2 Antibody A04773T88

Western blot (WB) analysis of Cofilin1/2 (T88) pAb at 1:500 dilution

Lane1:CT26 whole cell lysate(40ug)

Lane2:H9C2 whole cell lysate(40ug)

Lane3:HCT116 whole cell lysate(40ug)

Lane4:COS-7 whole cell lysate(40ug)

Electrophoresis was performed on a SDS-PAGE gel. To determine SDS-PAGE gel concentration



Figure 3. Western blotting validation for Anti-Cofilin1/2 (T88) CFL2 Antibody A04773T88

Western blot (WB) analysis of Cofilin1/2 (T88) pAb at 1:500 dilution

Lane1:Jurkat whole cell lysate(40ug)

Lane2:BV2 whole cell lysate(40ug)

Lane3:PC12 whole cell lysate(40ug)

Lane4:NIH-3T3 whole cell lysate(40ug)

Lane5:Hela whole cell lysate(40ug)

Electrophoresis was performed on a SDS-PAGE gel. To determine SDS-PAGE gel concentration

Submit a product review to Biocompare.com

Submit a review of this product to Biocompare.com to receive a \$20 Amazon.com giftcard! Your reviews help your fellow scientists make the right decisions. Thank you for your contribution.



Anti-Cofilin1/2 (T88) CFL2 Antibody