

Anti-PRRX1 Antibody

Catalog Number: A04774

About PRRX1

The paired related homeobox protein 1 (PRRX1) is a paired-type DNA-binding homeodomain that plays an important role as a key switch for neural cell lineage determination and is essential for development (1,2). PRRX1 is expressed in a number of undifferentiated mesenchymal cells in mouse embryos and adults (3). Mice with a disrupted PRRX1 gene show perinatal death with craniofacial and limb malformations (4). Low PRRX1 expression levels were significantly associated with metastasis and poor prognosis of breast and colorectal cancer (5).

Overview

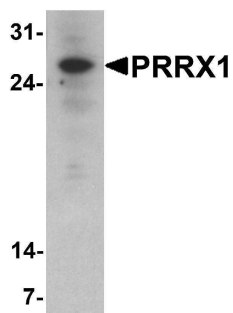
Product Name	Anti-PRRX1 Antibody
Reactive Species	Human, Mouse, Rat
Description	Boster Bio Anti-PRRX1 Antibody (Catalog # A04774). Tested in ELISA, WB applications. This antibody reacts with Human, Mouse, Rat.
Application	ELISA, WB
Clonality	Polyclonal
Formulation	PRRX1 antibody is supplied in PBS containing 0.02% sodium azide.
Storage Instructions	PRRX1 antibody can be stored at 4°C for three months and -20°C, stable for up to one year.
Host	Rabbit
Uniprot ID	P54821

Technical Details

Immunogen	PRRX1 antibody was raised against a 19 amino acid peptide near the center of human PRRX1. The immunogen is located within amino acids 70 - 120 of PRRX1.
Predicted Reactive Species	Chicken
Cross Reactivity	PRRX1 antibody is human, mouse and rat reactive. At least two isoforms of PRRX1 are known to exist; this antibody will detect both isoforms.
Isotype	IgG
Form	Liquid
Concentration	1 mg/mL
Purification	PRRX1 antibody is affinity chromatography purified via peptide column.
Suggested Dilutions	PRRX1 antibody can be used for detection of PRRX1 by Western blot at 1 - 2 ug/ml.

Antibody validated: Western Blot in human samples. All other applications and species not yet tested. Optimal dilutions for each application should be determined by the researcher.

Anti-PRRX1 Antibody (A04774) Images



Western blot analysis of PRRX1 in HeLa cell lysate with PRRX1 antibody at 1 ug/ml.

Submit a product review to Biocompare.com

Submit a review of this product to Biocompare.com to receive a \$20 Amazon.com giftcard! Your reviews help your fellow scientists make the right decisions. Thank you for your contribution.



Anti-PRRX1 Antibody

For Research Use Only. Not for use in diagnostic procedures.